



## Courtlands, TW10

£625,000

A larger than average purpose built two bedroom apartment offering approximately 1,012 sq ft of accommodation. The property is perfectly located for a number of Ofsted rated outstanding schools including Holy Trinity, Marshgate & St Elizabeth's.

Courtlands is a well maintained, private, sought after residential development set within extensive communal grounds and benefitting from on-site portage. Richmond and North Sheen stations offer tube or rail services into Central London via the District Line, South West Trains and London Overground.

### Features

- Two Double Bedrooms
- Spacious Double Reception
- On-Site Porter
- Delightful Communal Grounds
- Residents Parking
- Share Of Freehold



## Courtlands, TW10

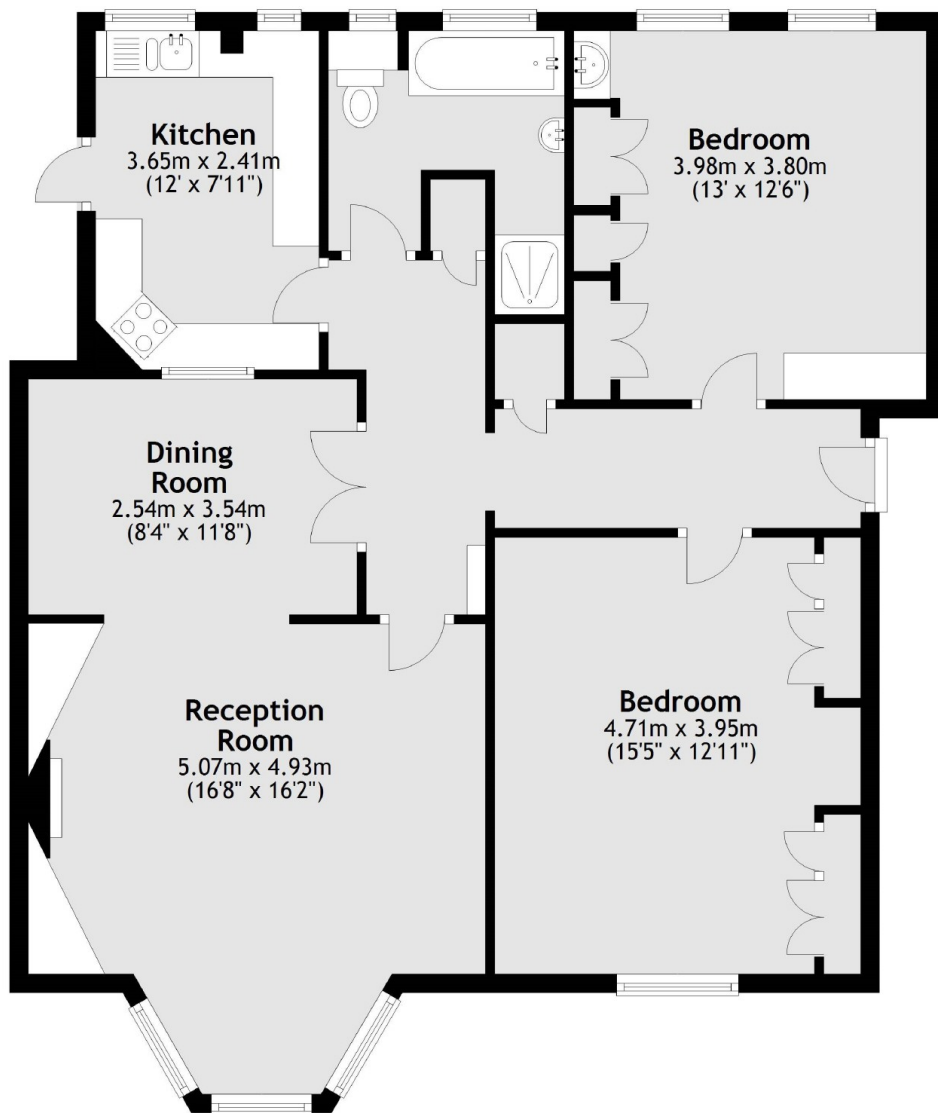
The property is entered via a communal entrance hall with secure entry phone system and provides lift and staircase access to the first floor communal landing with door into the property.

The accommodation consists of a large entrance hall with storage cupboards, a very spacious double reception room with bay window, a fully fitted kitchen, a master double bedroom with built-in wardrobes, a second double bedroom with built-in wardrobes and a spacious four piece family bathroom.

To the outside is unallocated off street parking spaces for residents and visitors. The property is surrounded by well maintained communal grounds with areas laid to lawn with mature trees, flowers and shrubs including a delightful pond.



# Courtlands, Richmond, TW10



Total area: approx. 94.0 sq. metres (1012.2 sq. feet)