



**The Shires, TW10**

£1,750,000

**Dexters**



## The Shires, TW10

A rare opportunity to purchase this stunning link-detached family residence set within a peaceful cul-de-sac that has been designed and modernised to an impeccable standard and offers in excess of 2000 sq ft of living space.

The ground floor comprises a welcoming entrance hall that leads into a reception room, downstairs w/c, a modern semi-open plan fitted kitchen with door into a separate dining room, and the main open plan living room and conservatory with access into the garden.

The first floor consists of a spacious landing leading to four bedrooms, one of which is a large master with a stylish ensuite, a further recently modernised family bathroom, and utility cupboard. The property has been modernised and maintained to exacting standards throughout, facilitating an easy move for families.

Outside to the rear is a spacious and mature south-west facing garden perfect accessed via the conservatory which makes for the perfect entertaining space. To the side is a garage which is accessed via a private driveway alongside a well-kept front garden laid to lawn.

### Features

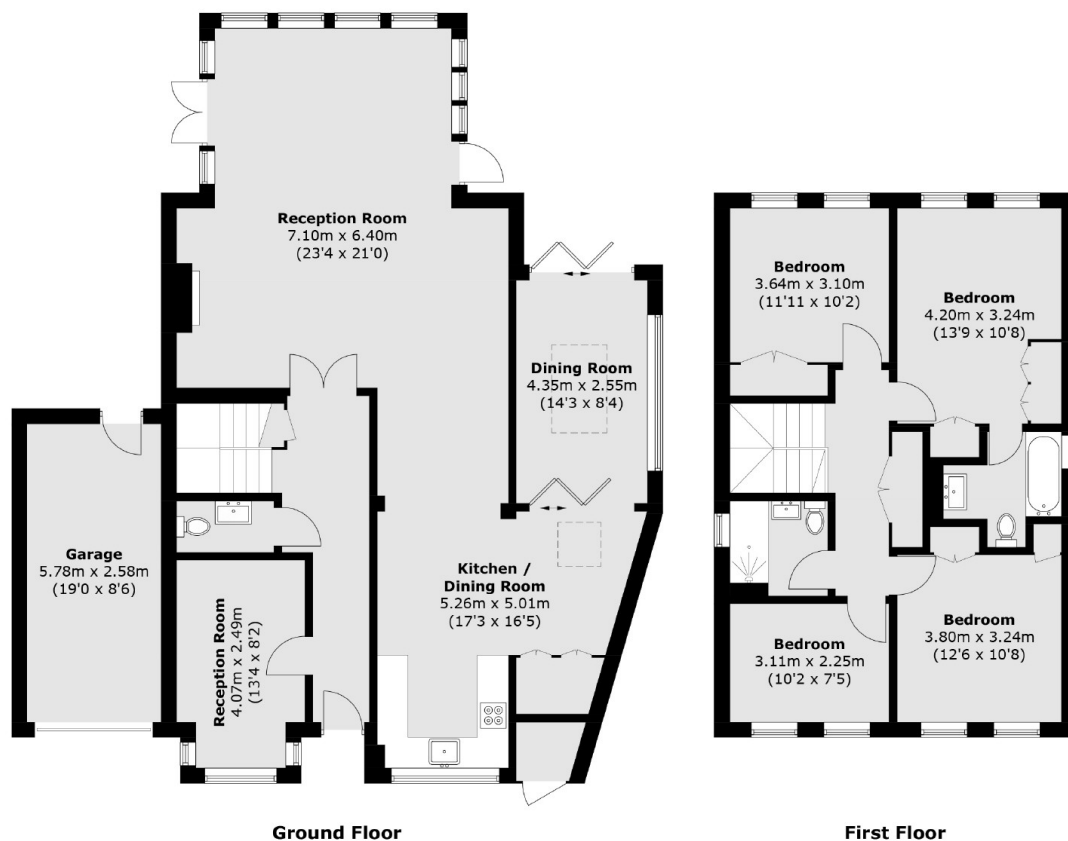
- Link-Detached Family Home
- Outstanding Condition
- 2,032 sq ft
- Scope To Extend STPP
- Off Street Parking And Garage
- South-West Facing Garden







# The Shires, Richmond, TW10



Total area (approx.): 188.8 sq. m (2032.3 sq. ft)