



Whitcome Mews, TW9

£440,000

A beautifully presented one double bedroom flat situated on the ground floor of this well-maintained building within the popular Kew Riverside development. The apartment has a large balcony and comes with an allocated parking space and an additional storage unit located in the underground car park.

Magenta House is located in the sought after Kew Riverside development set within communal landscaped gardens. Kew Riverside is within easy reach of the Thames Path, Kew Retail Park, Kew Gardens Station providing District Line and Overground services and the local village shopping amenities.

Features

- One Double Bedroom
- Allocated Parking Space
- Additional Storage Unit
- Large Balcony
- 24/7 Concierge
- Residents Gym



Whitcome Mews, TW9

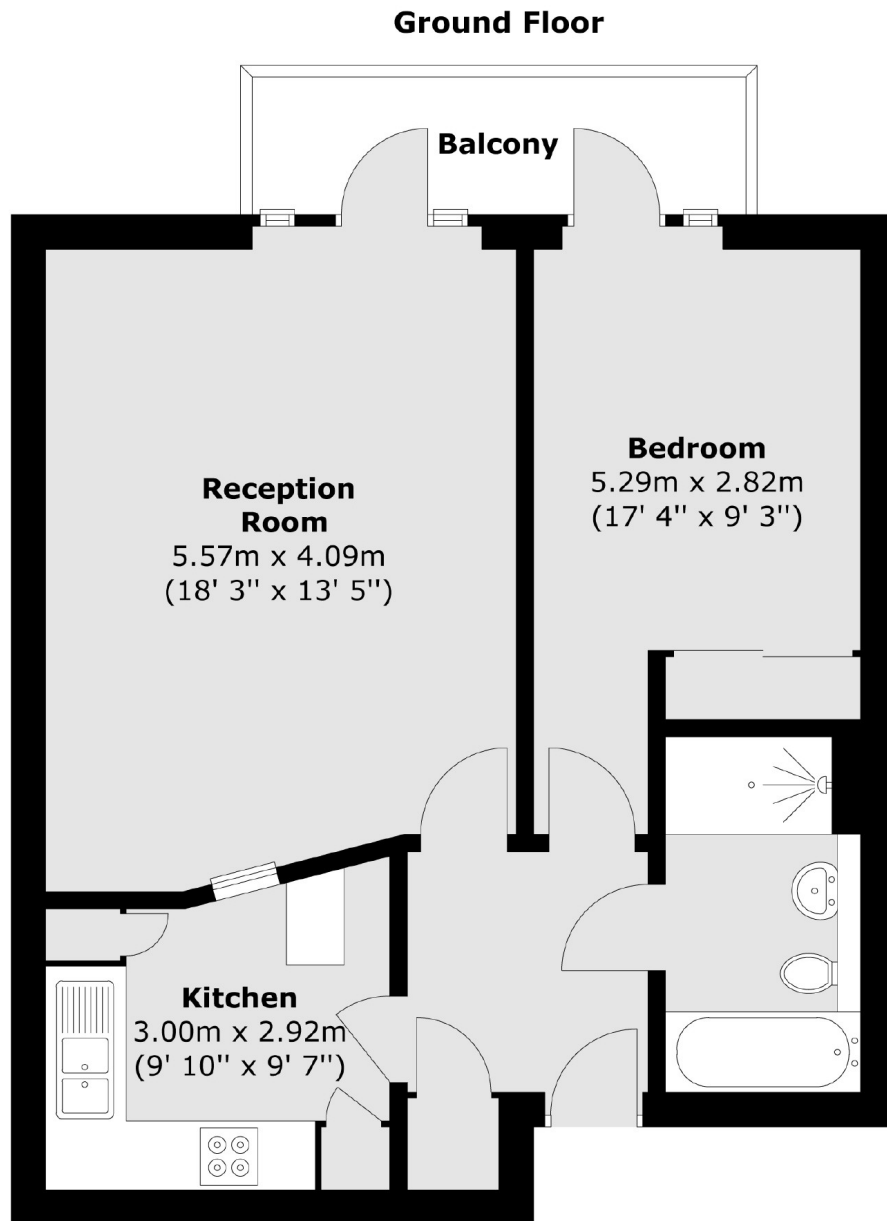
This bright and spacious apartment is approached by a well-maintained communal hallway with entry phone access. The property is very well proportioned and is presented in excellent condition throughout.

The accommodation consists of an entrance hall, a spacious reception room providing access to a large balcony, a modern fitted kitchen with integrated appliances, a double bedroom also leading to the balcony, and a contemporary bathroom.

The Kew Riverside Development offers residents an abundance of facilities, including allocated parking for one car, a 24 hour concierge, residents gym, pool and health and leisure club, and direct access to the Thames Path.



Whitcome Mews, Kew, TW9



Total area (approx.) : 56.4 sq. m (607 sq. ft)
Total balcony area (approx.) : 5.2 sq. m (56 sq. ft)