



Butler Farm Close, TW10

£400,000

A superb first floor two bedroom, two bathroom apartment situated within an exclusive gated development behind Ham Common. The property offers approximately 727 sq ft of accommodation and benefits from allocated off street parking, secure bike storage and communal gardens.

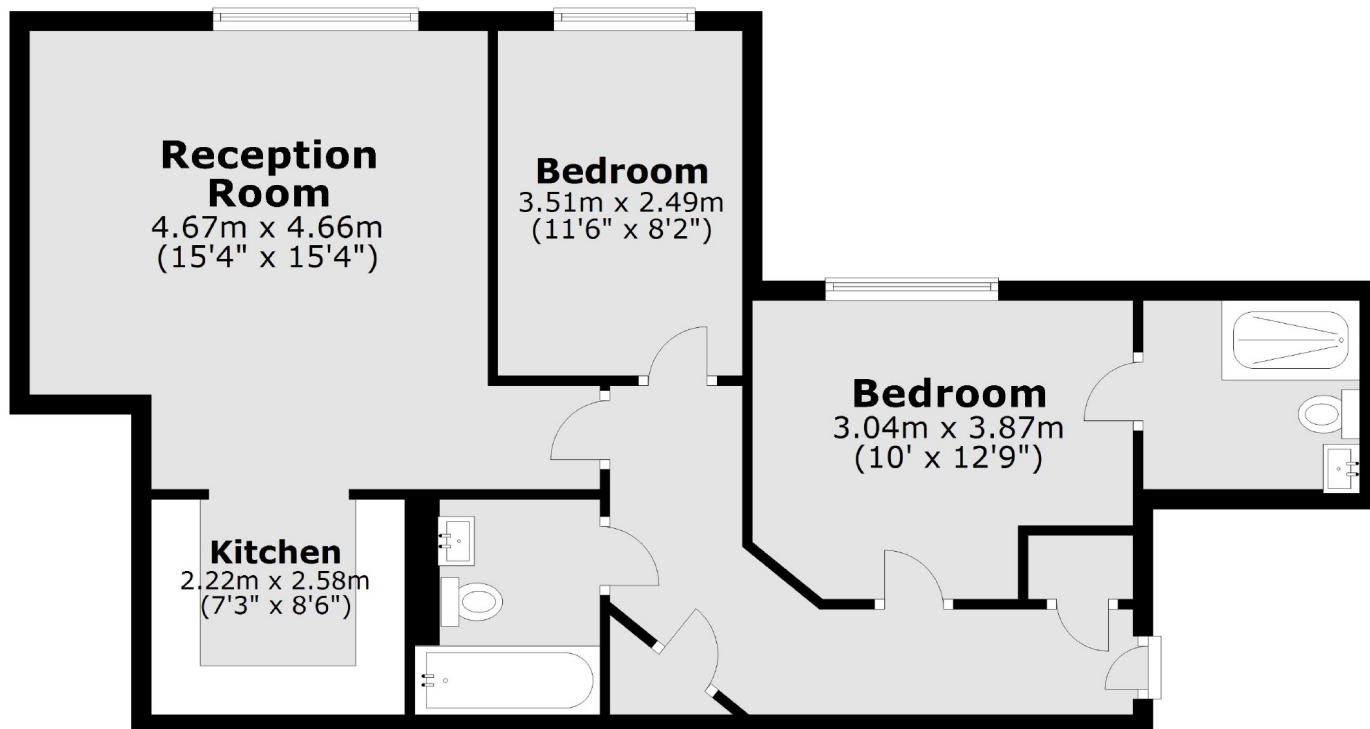
If its green open spaces you love then this location will not disappoint. With Ham Common, Richmond Park, Petersham Meadows and the River Thames on your doorstep, what more could you want. Families are also well catered for with the German School, Grey Court School and Meadlands Primary School.

Features

- Modern Gated Development
- Two Double Bedrooms
- Two Bathrooms
- Spacious Reception Room
- Off Street Parking
- Communal Gardens

Butler Farm Close, Ham, TW10

First Floor



Total area: approx. 67.6 sq. metres (727.7 sq. feet)