

## Roehampton Lane, SW15

£2,600 Per calendar month

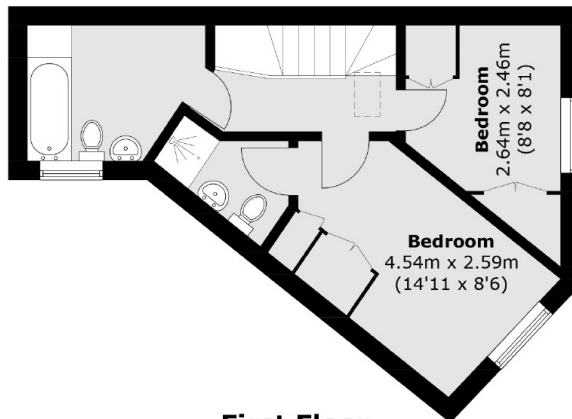
An extremely unique town house of almost 1000 sq ft arranged over three floors with a spacious reception, eat in kitchen, three bedrooms, three bathrooms and a south facing garden.

The property is tucked away in a small development on Roehampton Lane moments from the local High Street, University & Putney Heath. The property also benefits from excellent transport links to Kingston, Putney and Barnes and easy access to Queen Mary Hospital.

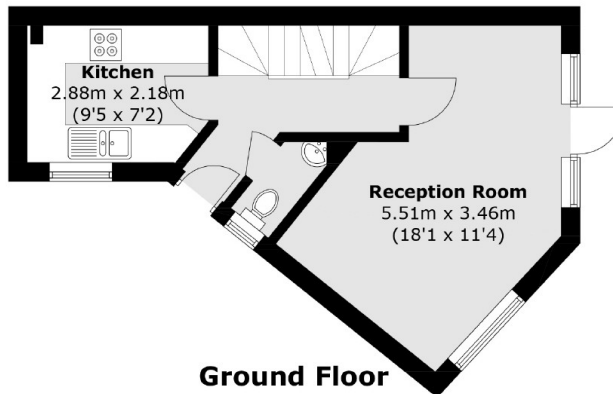
### Features

- Town House
- Separate Kitchen
- Three Bedrooms
- Three Bathrooms & WC
- South Facing Garden
- Neutral Decor

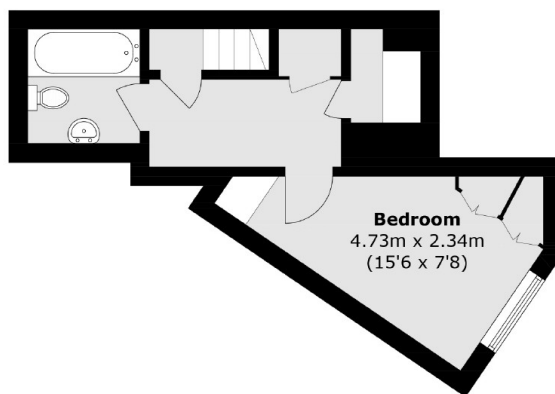
Roehampton Lane,  
London, SW15



**First Floor**



**Ground Floor**



**Lower Ground Floor**

Total area (approx.): 85.2 sq. m (917.1 sq. ft)

**Dexters**

Putney  
176 Putney High Street  
London  
SW15 1RS  
Lettings  
020 8789 9090

Energy Rating: C. We aim to make our particulars both accurate and reliable. However they are not guaranteed; nor do they form part of an offer or contract. If you require clarification on any points then please contact us, especially if you're traveling some distance to view. Please note that appliances and heating systems have not been tested and therefore no warranties can be given as to their good working order.

**RICS** | Regulated  
Estate Agent  
and Letting Agent

[dexters.co.uk](http://dexters.co.uk)