



## Huntingfield Road, SW15

**£2,795** Per calendar month

A newly renovated two bedroom house located with the sought after Dover House Estates. The property has been finished to high standard throughout, with further benefits of a integrated kitchen, tiled family bathroom and a private patio garden.

Huntingfield Road is an ideal location for families with excellent schools and Richmond Park close by, good transport links with Barnes station moments away and easy access to Putney High Street.

### Features

- Newly Renovated
- Two Double Bedrooms
- Spacious Reception
- Integrated Kitchen
- Tiled Bathroom
- Patio Garden

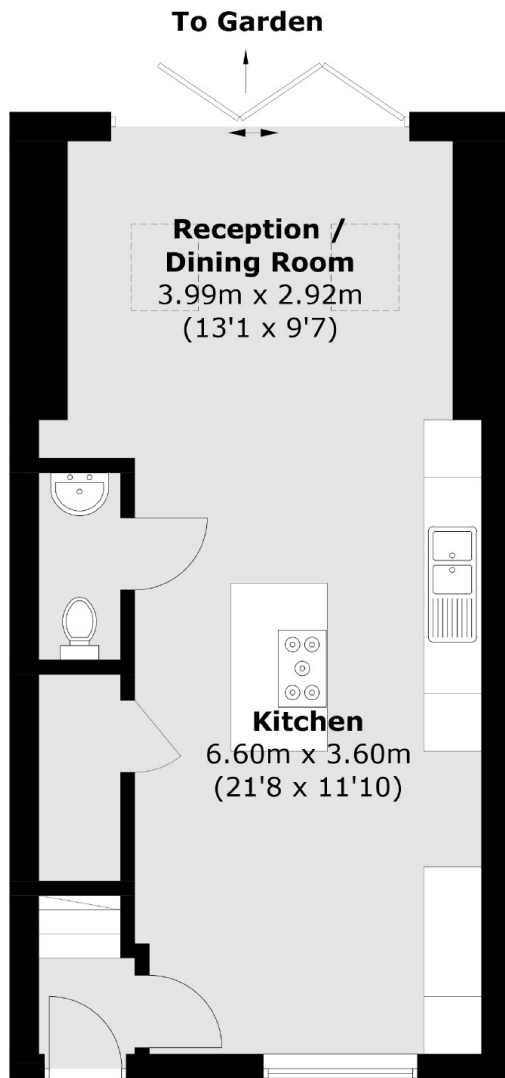




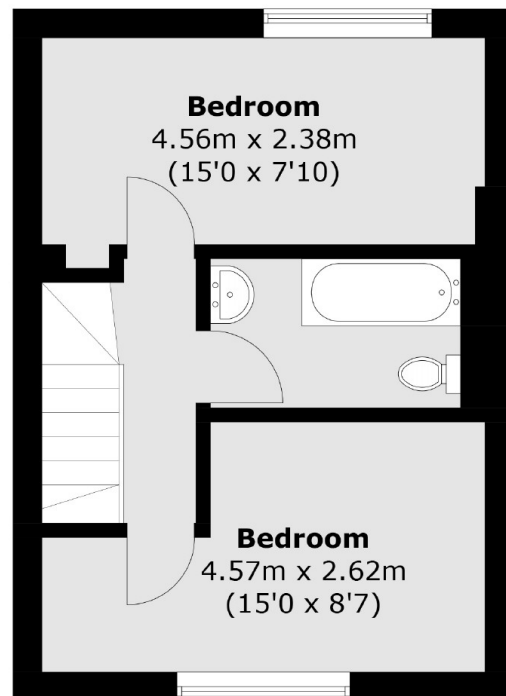
**Huntingfield Road, SW15**



# Huntingfield Road, London, SW15



**Ground Floor**



**First Floor**

Total area (approx.): 72.9 sq. m (784.7 sq. ft)