

## Wandsworth High Street, SW18

### £525,000

A smart and extremely well presented third floor apartment with a spacious open plan reception room with direct access onto a covered balcony, two double bedrooms and a modern bathroom.

Lyon House is a small development located in the very heart of Wandsworth so ideal for easy access to Wandsworth Town train station and all of the many amenities to be found in the Town Centre.

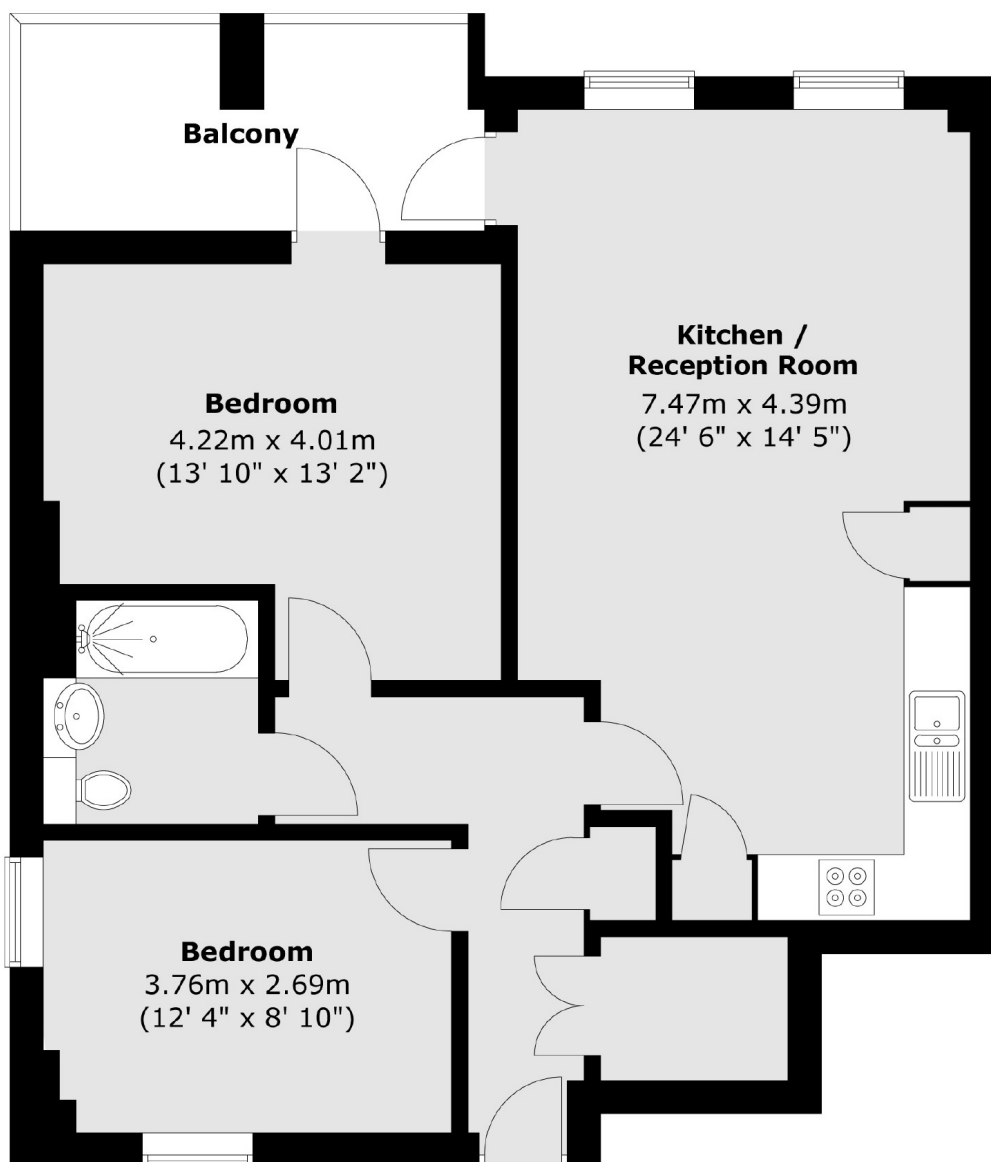
### Features

760 sq ft  
25ft Open Plan Reception  
Two Double Bedrooms  
Priced To Sell

Central Location

# Wandsworth High Street, London, SW18

## Third Floor



Total area (approx.) : 70.4 sq. m (758 sq. ft)  
Total balcony area (approx.) : 7.2 sq. m (78 sq. ft)