



West Hill Road, SW18

£520,000

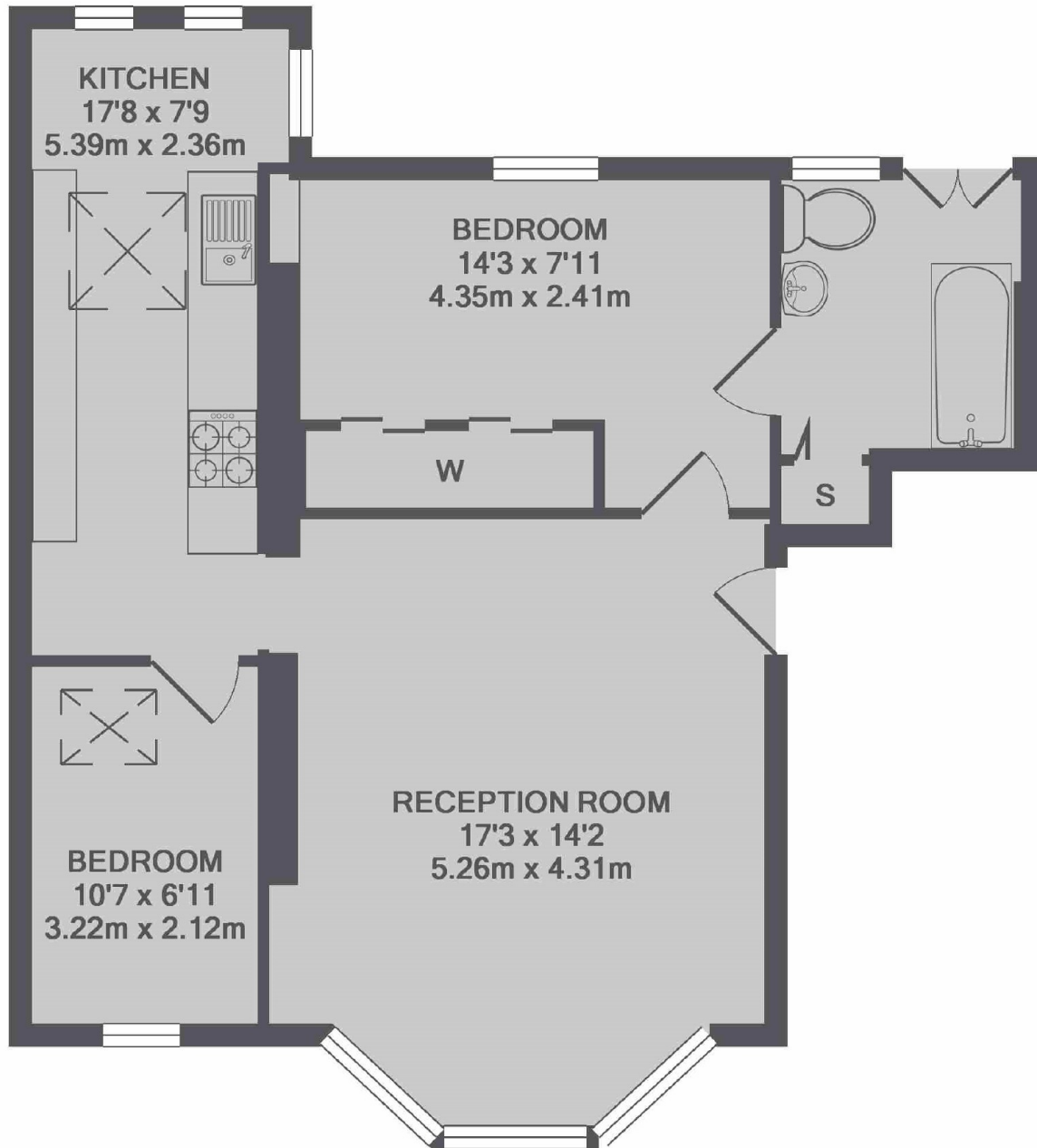
This Victorian conversion flat has two bedrooms, is in good condition throughout and retains much of its character and charm. The property has an allocated parking space, communal garden and no onward chain.

West Hill Road is beautiful street in Wandsworth, well located for buyers seeking the balance between a quiet location with great access to transport links. East Putney Tube station and bus links are close by as well easy access to the A3 and through to Wandsworth.

Features

- Two Bedrooms
- Victorian Conversion
- Great Condition
- High Ceilings
- Character
- Communal Garden

West Hill Road, London, SW18



TOTAL APPROX. FLOOR AREA 644 SQ.FT. (59.8 SQ.M.)