



Pettiward Close, SW15

£800,000

This freehold house in West Putney was built around 1980 and has three bedrooms, two bathrooms and a good size garden. The house has wood floors and double glazing.

Pettiward Close is a private road off Colinette Road in Upper West Putney. Its proximity to Putney High Street and Rail Station adds convenience and accessibility to this already desirable location.

Features

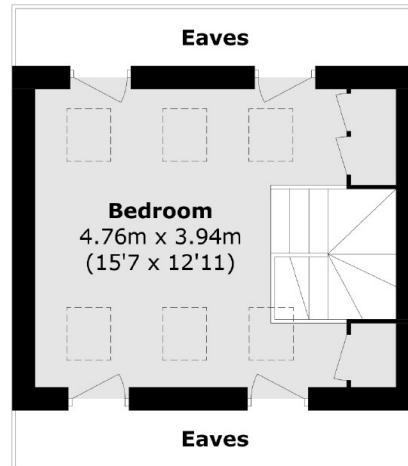
- Freehold House
- Three Bedrooms
- Parking
- Private Road
- Garden
- No Chain



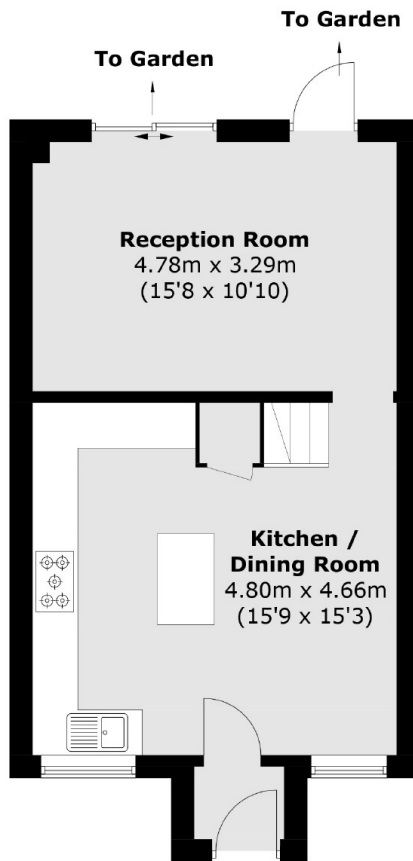
Pettiward Close, SW15



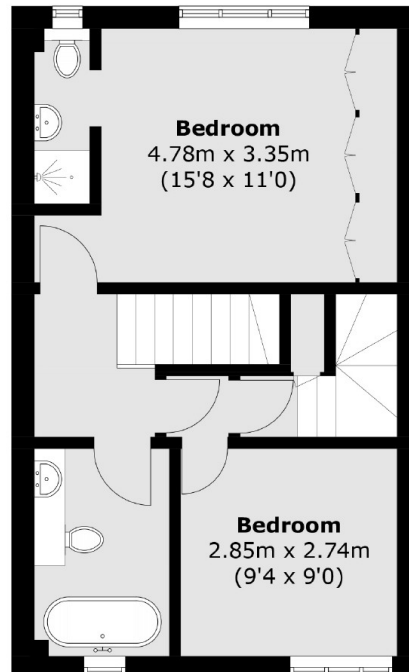
Pettiward Close, London, SW15



Second Floor



Ground Floor



First Floor

Total area (approx.): 99.5 sq. m (1,071.0 sq. ft)
(Excluding Eaves)