



## Lytton Grove, SW15

£675,000

This stylish conversion flat is on the top floor of a good-looking detached Edwardian villa. The flat has two large bedrooms, period features throughout and access to a garden,

Lytton Grove connects West Hill to Putney Hill. There is a shortcut to East Putney station from Lytton Grove and Putney High Street is not far away. Wimbledon Common, Putney Heath and Richmond Park are all close by.

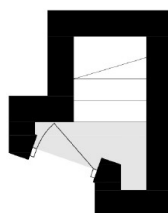
### Features

- Top Floor
- Two Bedrooms
- Stylish Design
- Garden
- Large Kitchen
- Edwardian Conversion

# Lytton Grove, London, SW15



## First Floor



## Ground Floor

Total area (approx.): 100.6 sq. m (1,082.8 sq. ft)  
(Excluding Eaves)

**Dexters**

Putney  
176 Putney High Street  
London  
SW15 1RS  
Sales  
020 8789 9999

Energy Rating: D. We aim to make our particulars both accurate and reliable. However they are not guaranteed; nor do they form part of an offer or contract. If you require clarification on any points then please contact us, especially if you're traveling some distance to view. Please note that appliances and heating systems have not been tested and therefore no warranties can be given as to their good working order.

 **RICS** | Regulated  
Estate Agent  
and Letting Agent

[dexters.co.uk](http://dexters.co.uk)