

Horne Way, SW15

£375,000

Set within Jay House on Horne Way, this well-presented two bedroom apartment offers bright and well-balanced accommodation extending to approximately 629 sq ft, with the added benefit of a private balcony.

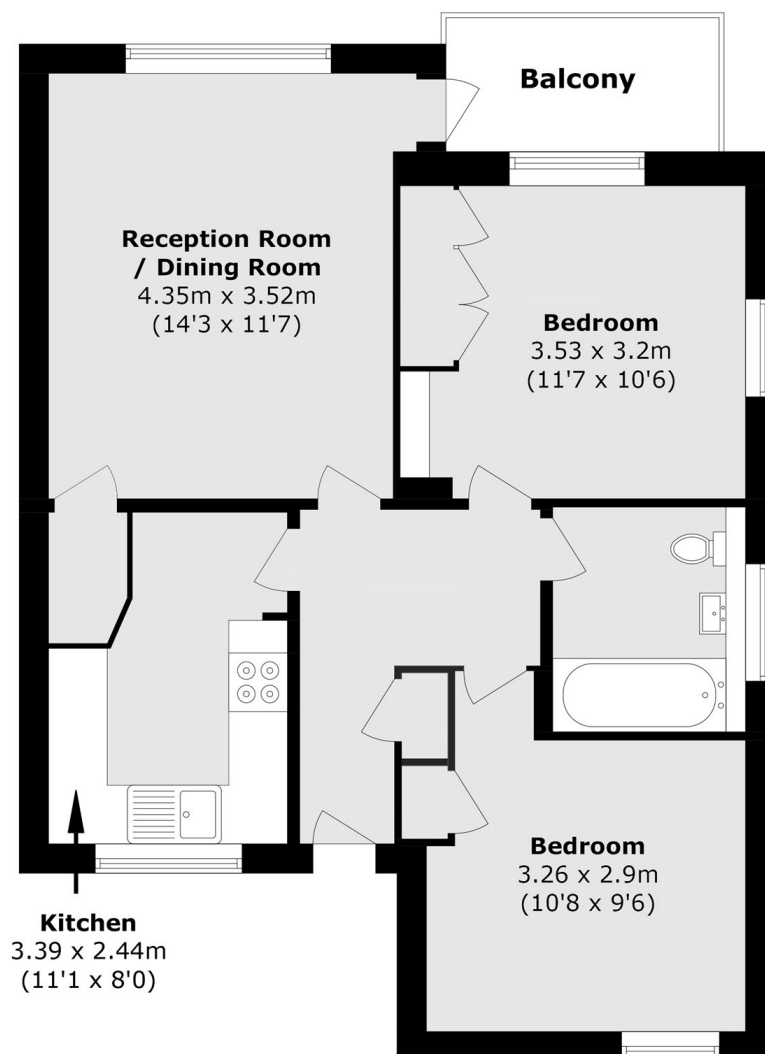
The property features a spacious reception/dining room with direct access to the balcony, enjoying open outlooks and plenty of natural light. The separate fitted kitchen is smartly arranged with ample storage and worktop space. There are two well-proportioned bedrooms and a modern family bathroom.

Perfectly positioned for the amenities of Putney and Barnes, the property benefits from easy access to a wide selection of shops, cafés, restaurants and green open spaces, including Putney Heath and Richmond Park. Excellent transport links are close by, with District Line services and mainline trains into London Waterloo within easy reach, along with frequent bus routes providing convenient connections across South West London.

Features

- Two Bedrooms
- One Bathroom
- Private Balcony
- 628 Sq. Ft
- Lift
- Separate Kitchen

Horne Way, London, SW15



Total area (approx.): 58.5 sq. m (629.6 sq. ft)

Balcony area (approx.): 3.8 sq. m (40.9 sq. ft)