



Roehampton Lane, SW15

£475,000

A beautifully presented, light and spacious two bedroom apartment, situated within Emerald Square, a sought after development built by the ever popular St James Group in 2013.

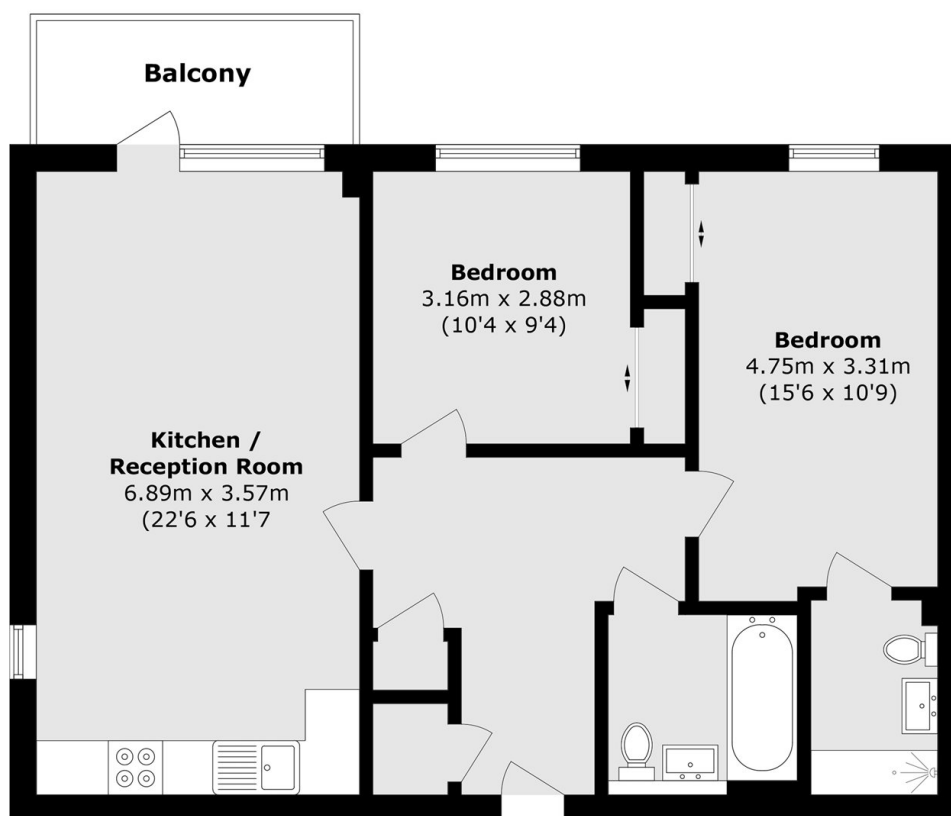
The flat offers a large modern kitchen boasting integrated appliances, ample storage and opens onto the reception/dining area with access to a large balcony. The main bedroom has built in wardrobes and presented to the highest of standards. A second double bedroom, large family bathroom and a well-presented entrance hallway complete the accommodation.

Barnes Station is close by with frequent trains to Vauxhall and Waterloo. Richmond Park, Barnes Common and Putney Heath are all a short distance.

Features

- Two Bedrooms
- Two Bathrooms
- South-Facing Balcony
- Underground Parking Space
- 15 min Walk to Barnes Station
- No Onward Chain

Roehampton Lane, London, SW15



Total area (approx.): 68.6 sq. m (738.4 sq. ft)

Balcony area (approx.): 4.8 sq. m (51.7 sq. ft)