



Breamore Close, SW15

£525,000

Dexters



Breamore Close, SW15

A stunning house of almost 1100 sq ft arranged over two floors with a spacious reception, eat in kitchen, three double bedrooms and sliding doors onto a South East Facing garden.

The property also comes with a private garage and off street Parking.

The property is tucked away in a small development in Roehampton Lane moments from the local High Street, University & Putney Heath. The property also benefits from excellent transport links to Kingston, Putney and Barnes and easy access to Queen Mary Hospital.

Features

- Three Bedrooms
- One Bathroom
- Private Garage
- Off Street Parking
- Chain Free
- South East Facing Garden.



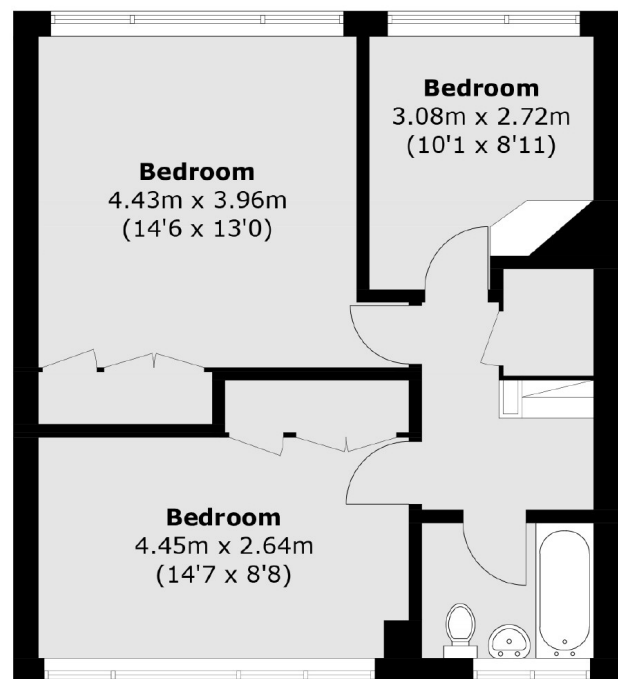
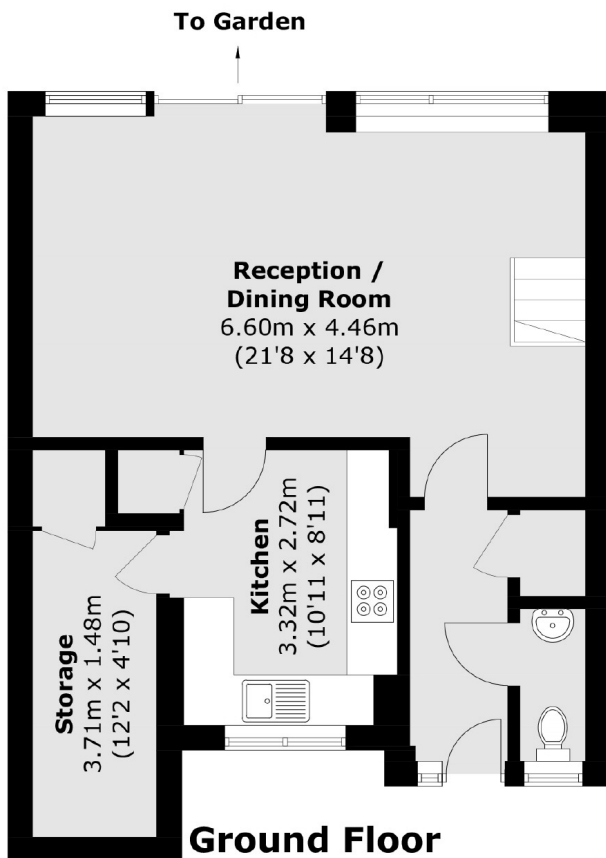




Breamore Close, London, SW15



(Not Shown In Actual
Location / Orientation)



Total area (approx.): 100.0 sq. m (1,076.4 sq. ft)
Garage: 13.8 sq. m (148.5 sq. ft)
(Including Void)