



**Southfields Road, SW18**  
**£550,000**

**Dexters**



## Southfields Road, SW18

This bright and spacious two-bedroom, Two Bathroom maisonette offers over 930 sq ft of accommodation arranged over two floors. The first floor features a generous reception room with large windows, a separate dining room, and a modern kitchen. Upstairs, there are two well-proportioned bedrooms and a family bathroom. The property further benefits from large windows allowing plenty of natural light, ample storage, and a gated entrance,

Southfields Road is nestled between Putney and Wandsworth Town Centres so ideal for easy access for East Putney (District line) or Wandsworth Town with their many amenities and transport links. Wandsworth Park and River Thames is within a 15 minute walk.

(\*These photos have been virtually staged, please rely on the floorplan and your own measurements regarding exactly how furniture would fit in each room)

### Features

- Two Bedrooms
- Two Bathrooms
- Chain Free
- 938 sq ft
- Split Level
- Gated Entrance





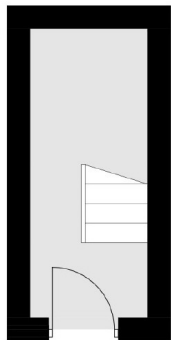




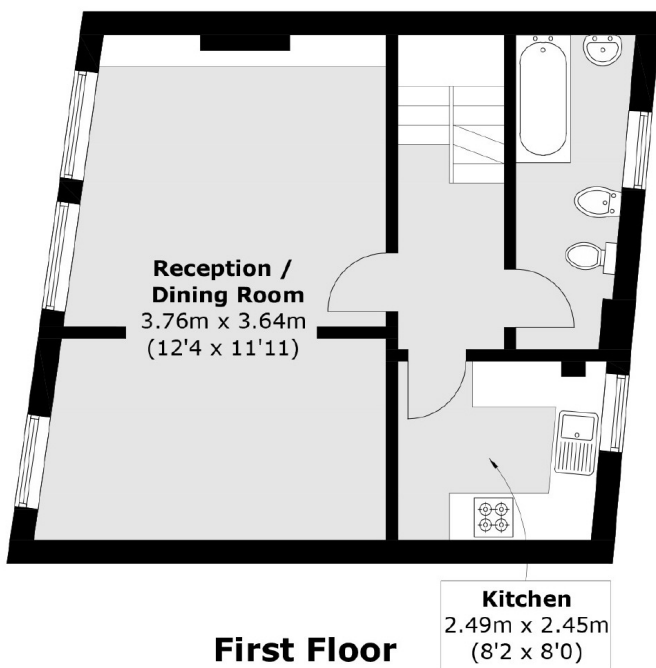




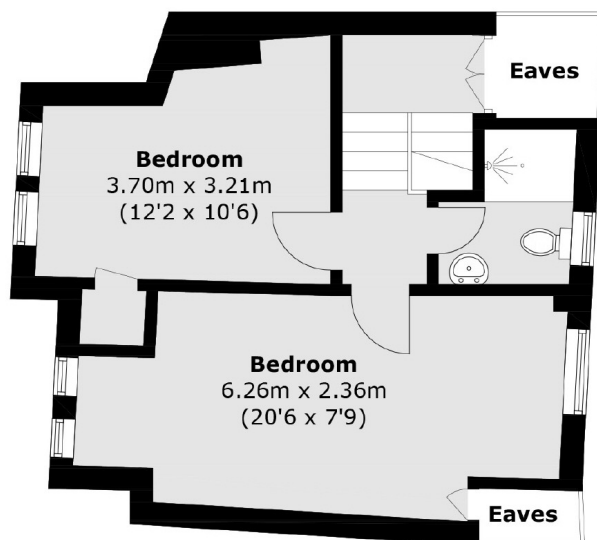
# Southfields Road, London, SW18



**Ground Floor**



**First Floor**



**Second Floor**

Total area (approx.): 87.2 sq. m (938.5 sq. ft)  
(Excluding Eaves)