



Upper Richmond Road, SW15

£600,000

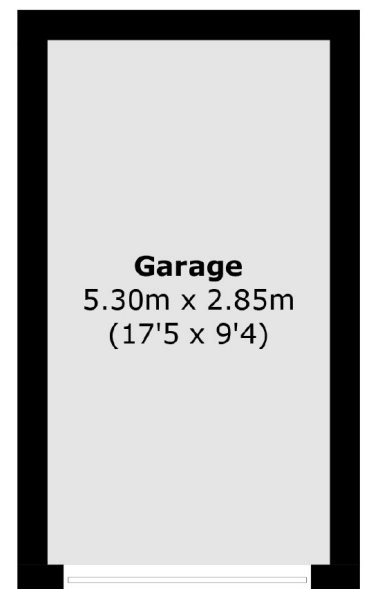
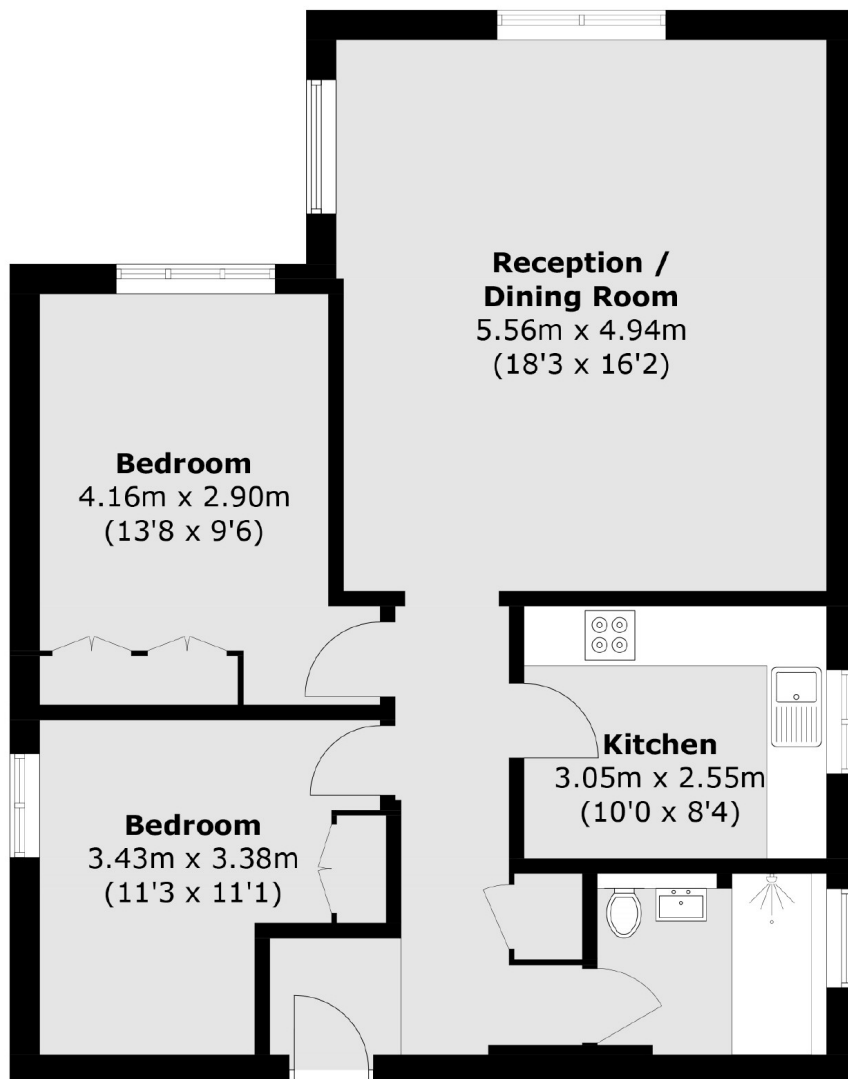
Set within a charming detached Victorian villa, this elegant raised ground conversion, offers two bedrooms, one bathroom, and a spacious layout. The property benefits from a private garage and a share of the freehold, the flat combines period charm with modern convenience.

Located on Upper Richmond Road, SW15, this property enjoys excellent transport links, with Putney and Barnes stations nearby, as well as a range of shops, cafes, and green spaces, making it perfect for professionals or small families.

Features

- Victorian conversion
- Private garage
- Large Living area
- 792 sqft
- Communal Gardens
- Share of Freehold

Upper Richmond Road, London, SW15



Ground Floor

(Not Shown In Actual
Location / Orientation)

Total area (approx.): 73.6 sq. m (792.2 sq. ft)
Garage: 15.1 sq. m (162.5 sq. ft)