



Wadham Road, SW15
£1,500,000

Dexters



Wadham Road, SW15

This Victorian freehold house is located in prime East Putney. It has been extended and extensively renovated to a very high standard by the current owners, with sliding doors opening onto a generously sized garden.

The ground floor offers a stunning open-plan kitchen and living space with direct access to the private garden. The first floor comprises two double bedrooms, a single bedroom, and two bathrooms.

The second floor has been converted by the current owners to provide a large bathroom and two good size offices, that could be easily converted into a large double bedroom. This level also offers direct access to a beautiful roof terrace.

Wadham Road is close to East Putney Tube and Putney Mainline stations with Wandsworth Park and Putney High Street nearby. There are some fantastic schools in the catchment area including Brandlehow Primary (State) and Hurlingham School (Independent).

Features

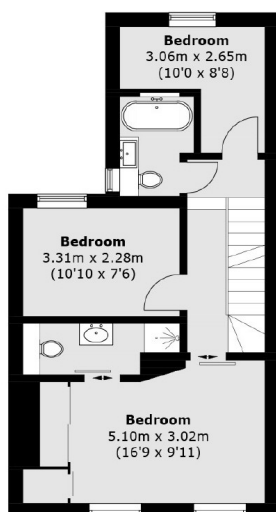
- Five Bedrooms
- Three Bathrooms
- Garden and Roof Terrace
- Victorian
- Central Putney Location
- Recently Renovated



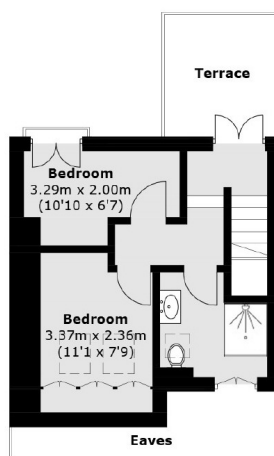




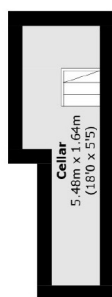
Wadham Road, London, SW15



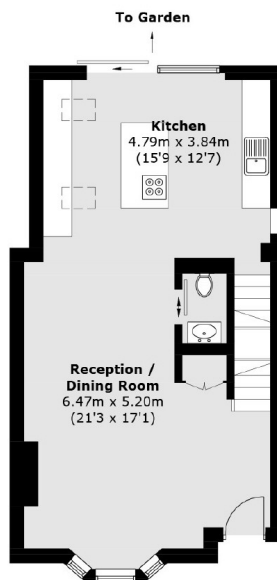
First Floor



Second Floor



Cellar



Ground Floor

Total area (approx.): 126.6 sq. m (1,362.7 sq. ft)
(Including Cellar / Excluding Eaves)
Terrace: 6.2 sq. m (66.7 sq. ft)