

## Kersfield Road, SW15

### £699,000

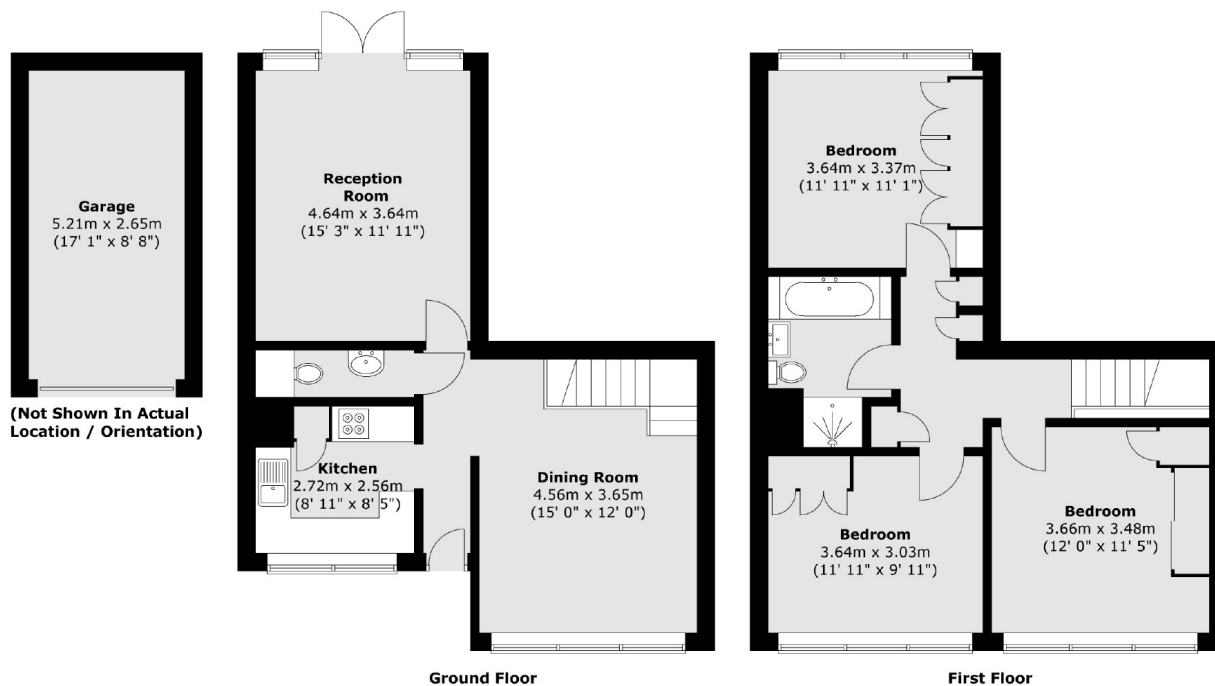
This bright and spacious three-bedroom home offers over 1,080 sq ft of accommodation arranged over two floors. The ground floor features a generous reception room with direct access to communal gardens, a separate dining room, and a modern kitchen. Upstairs, there are three well-proportioned bedrooms and a family bathroom. The property further benefits from large windows allowing plenty of natural light, ample storage, and a private garage.

Garden Royal is on Kersfield Road, just off Putney Hill. The property is ideally situated within walking distance of Wimbledon Common and offers excellent access to transport links, including Putney mainline train station, East Putney Underground station, and major bus routes. The A3 provides easy access to routes in and out of London.

### Features

- Three Bedrooms
- Split Level
- Share of Freehold
- Own Front Door
- Off Street Parking
- Private Garage

# Kersfield Road, London, SW15



Total area (approx.) : 100.8 sq. m (1085 sq. ft)  
Total garage area (approx.) : 13.9 sq. m (150 sq. ft)