

Warwick Drive, SW15

£2,800 Per calendar month

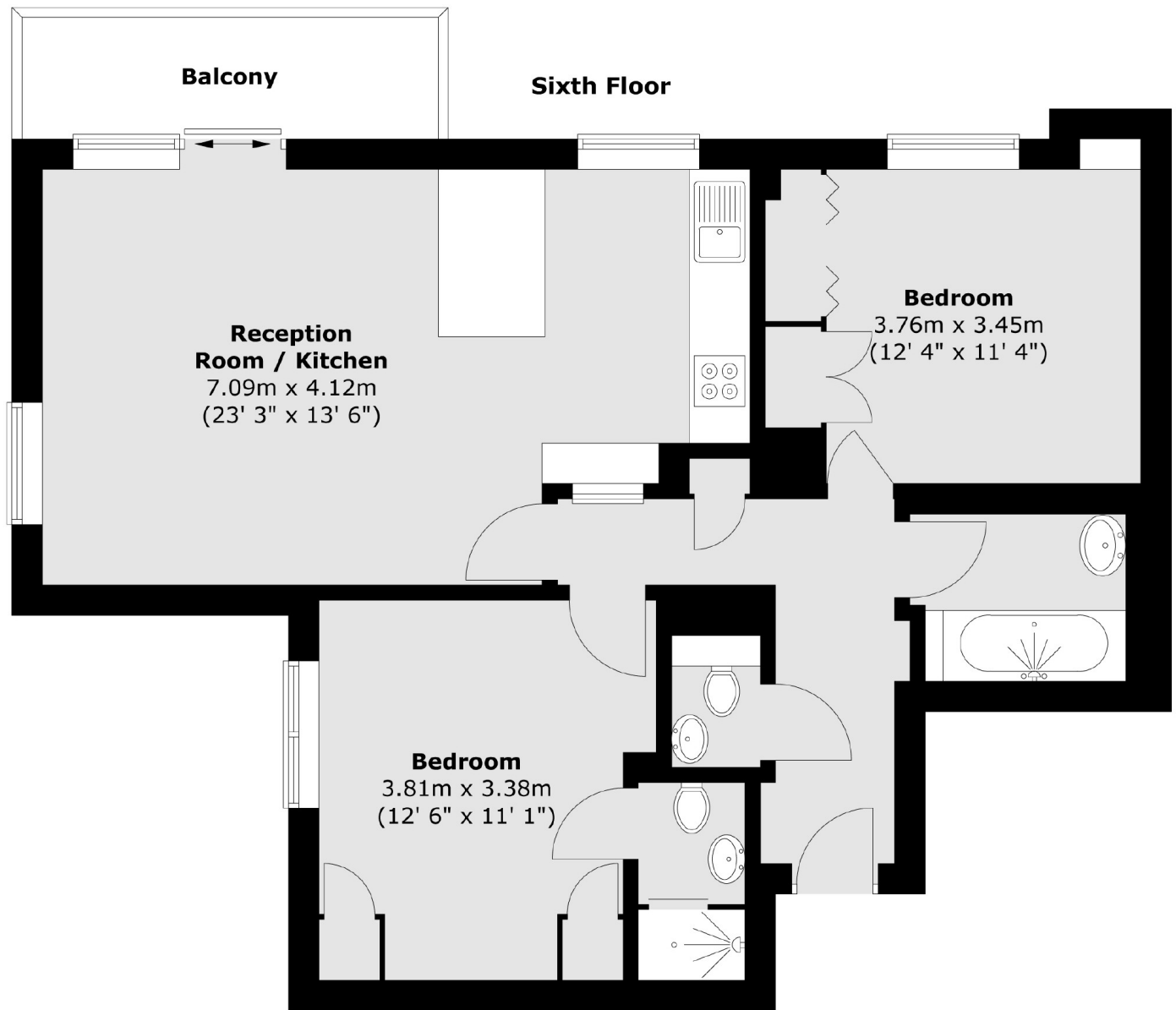
A stunning two double bedroom, two bathroom apartment located on the sixth floor of a sought after purpose built development. The property has been newly renovated to a high specification throughout, featuring a well sized open-plan reception, a brand new modern kitchen with integrated appliances, and a breakfast bar. Further benefits include a private balcony and underground parking.

Warwick Drive is a walk away from Barnes mainline station and bus links into Putney, ideally situated for your daily commute. A range of shops, bars and restaurants are also near by.

Features

- Two Bedrooms
- Two Bathroom
- Open Plan Reception
- Integrated Kitchen
- Private Balcony
- Underground Parking

Warwick Drive,
London, SW15



Total area (approx.) : 69.9 sq. m (752 sq. ft)
Total balcony area (approx.) : 5.1 sq. m (55 sq. ft)