



**Portsmouth Road, SW15**  
**£880,000**

**Dexters**



## Portsmouth Road, SW15

This beautifully finished four bedroomed apartment offers 1351 sqft of space in the Highlands Heath Development in Putney Heath. The property itself is situated on 2nd Floor with lift access. It has been developed by one of the Premier developers in Southwest London to the highest standard and stands apart from the rest of the market and offers wet underfloor heating throughout. The Reception room, Dining Room, Master Bedroom and fourth Bedroom are all south facing and have spectacular views over the impressive communal gardens which provides benches and tables for outdoor use.

All Bedrooms and Reception/Dining Rooms have wide planked Engineered American Walnut Flooring while the Bathroom, Kitchen and Shower Room, The utility rooms are fully tiled, with the kitchen also offering quartz work surfaces. The Main Hallway boasts a magnificent marble tiled area tastefully laid to provide an impressive entrance to the flat. Interior designed coffered ceilings in Hallway, Reception, Dining and Master Bedrooms with independently controlled Led Mood lighting.

Highlands Heath is in Putney Heath and has tennis and newly refurbished squash courts, communal gardens, off-street parking and a porter. The bars, shops and restaurants of Putney High Street and Wimbledon Village are a short journey away, as are Putney Station and East Putney.

### Features

Offers In Excess Of

1351 sqft

Four Bedrooms

Two Bathrooms

Tennis Courts

Share of the Freehold







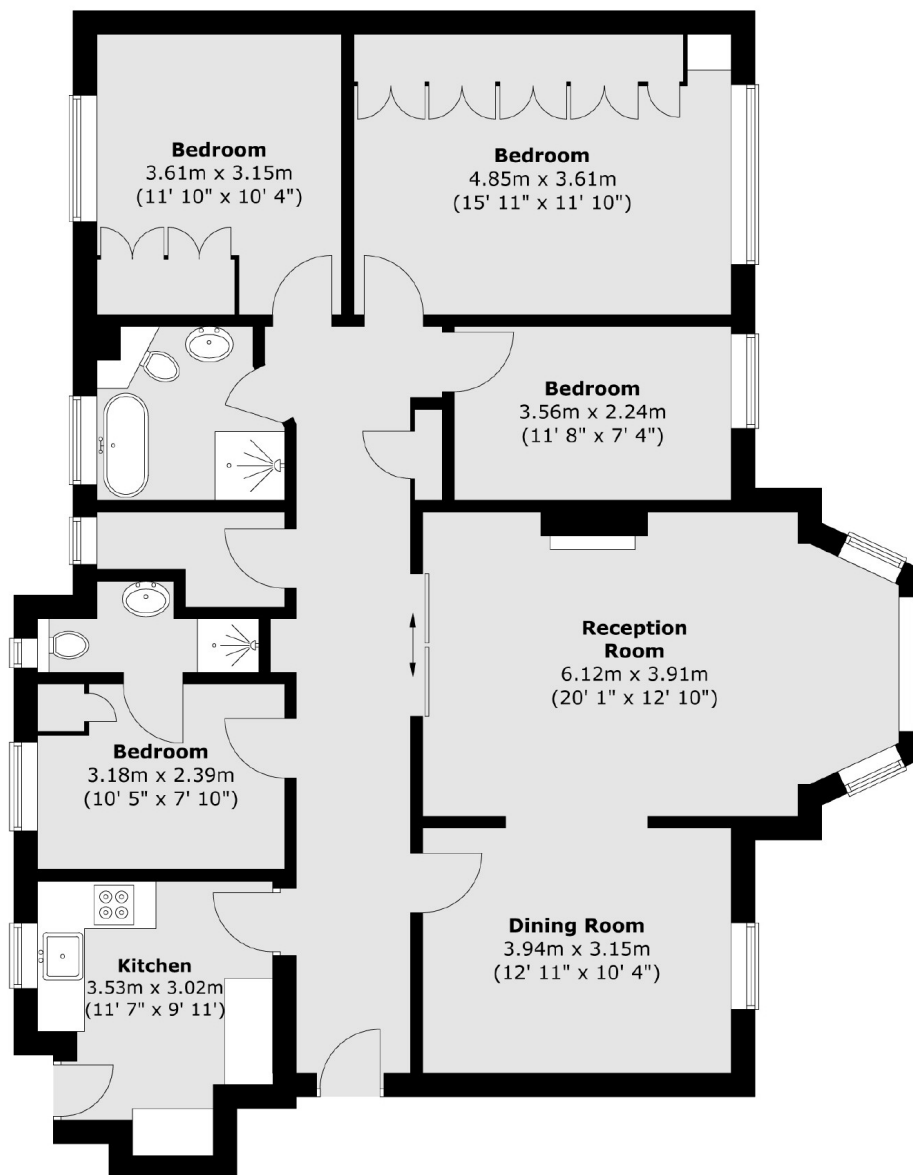






# Portsmouth Road, London, SW15

## Second Floor



Total area (approx.) : 125.5 sq. m (1351 sq. ft)