



Southfields Road, SW18

£1,100,000

A four bedroom, three bathroom family home built by -multi award winning developer Oppidan. Residents benefit from a private garden, Bosch appliances and parking*

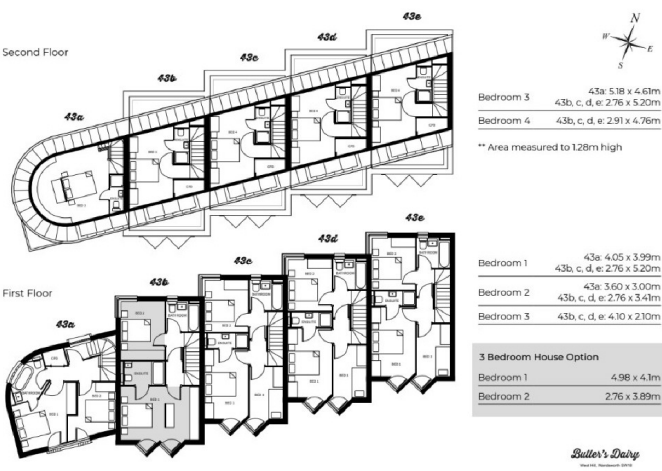
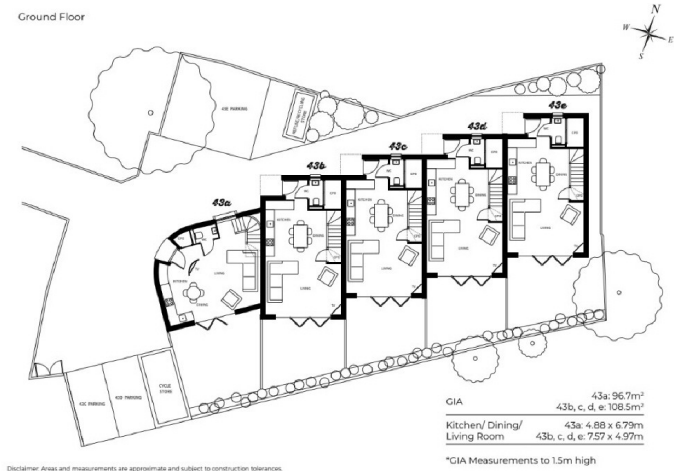
****Please note - Whilst every effort has been made to accurately portray the development, CGI images have been used, alongside indicative floorplans produced from the planning documents.****

Nestled within the heart of Wandsworth, there is a blend of urban convenience, quiet streets and green spaces. Butler's Dairy is very well connected with close transport links, a variety of shops, cafes, sporting centres and excellent schools. The town centre offers High-Street shopping, a multi-screen cinema, entertainment & leisure facilities and the new Brewery Quarter, while the village centres offer boutique shops, cafes, bars and delicatessens.

Features

- Four Bedrooms
- Three Bathrooms
- New Build Warranty
- *Parking*
- *EV Charging*
- Wet Underfloor Heating
- Bosch Appliances
- Southfields Station
- East Putney Station

Southfields Road, London, SW18



Dexters

Putney
176 Putney High Street
London
SW15 1RS
Sales
020 8789 9999

Energy Rating: . We aim to make our particulars both accurate and reliable. However they are not guaranteed; nor do they form part of an offer or contract. If you require clarification on any points then please contact us, especially if you're traveling some distance to view. Please note that appliances and heating systems have not been tested and therefore no warranties can be given as to their good working order.

 **Regulated
Estate Agent
and Letting Agent**

[dexters.co.uk](https://www.dexters.co.uk)