



St. John's Avenue, SW15

£735,000

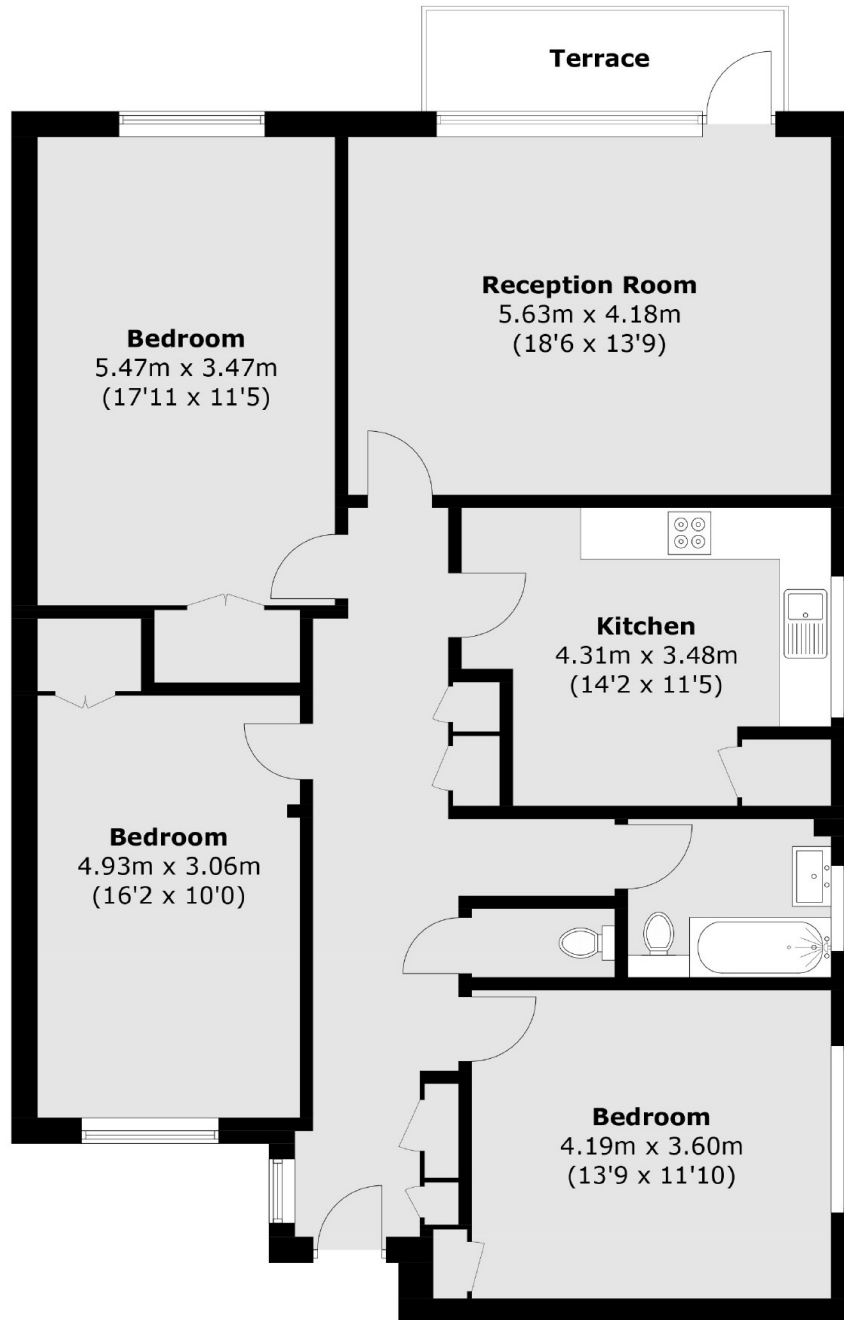
This spacious 1,272 sq ft three-bedroom apartment is offered to the market chain-free and in good condition. The property features three generous double bedrooms, all with built-in storage, a separate eat-in kitchen, and a large living room with expansive windows. The living room opens directly onto a private terrace, providing a great space for outdoor relaxation or entertaining. The property also comes with a private garage.

Ideally located just moments from East Putney Underground station (District Line) and within easy reach of Putney's mainline services to London Waterloo, this property is perfect for commuters. A wide range of local amenities including shops, cafés, and scenic riverside walks are all close by, making this a highly desirable location for both professionals and families.

Features

- 1272 sqft
- Three Double Bedrooms
- Private Garage
- Chain Free
- Central Putney Location
- Private Terrace

St. John's Avenue, London, SW15



Total area (approx.): 118.2 sq. m (1,272.3 sq. ft)
Terrace: 4.9 sq. m (52.7 sq. ft)

Dexters

Putney
176 Putney High Street
London
SW15 1RS
Sales
020 8789 9999

Energy Rating: . We aim to make our particulars both accurate and reliable. However they are not guaranteed; nor do they form part of an offer or contract. If you require clarification on any points then please contact us, especially if you're traveling some distance to view. Please note that appliances and heating systems have not been tested and therefore no warranties can be given as to their good working order.

 **RICS** | Regulated
Estate Agent
and Letting Agent

[dexters.co.uk](https://www.dexters.co.uk)