



Seaton Close, SW15

£1,500,000

Dexters



Seaton Close, SW15

A stunning three/four bedroom Georgian style property set within the beautiful grounds of one of the most sought after private developments in Putney.

A spacious entrance hall welcomes you into the home on the upper ground level. This floor offers a study/bedroom, which looks out onto the well maintained communal gardens to the front. A south facing living room with a fireplace overlooks the property's private garden. On the top floor there are three bedrooms, including a principal bedroom with fitted wardrobes and an en-suite, as well as a family bathroom.

On the Lower ground floor there is an impressive open plan kitchen & living room space with full-length bi-folding doors leading to the south facing garden. There is also a spacious utility room with doors leading out to the front, perfect for your grocery deliveries.

Seaton Close is part of the Lynden Gate development which is a secure, private gated development with on-site portage. It is located by Putney Heath and is within close proximity of Wimbledon Common.

Features

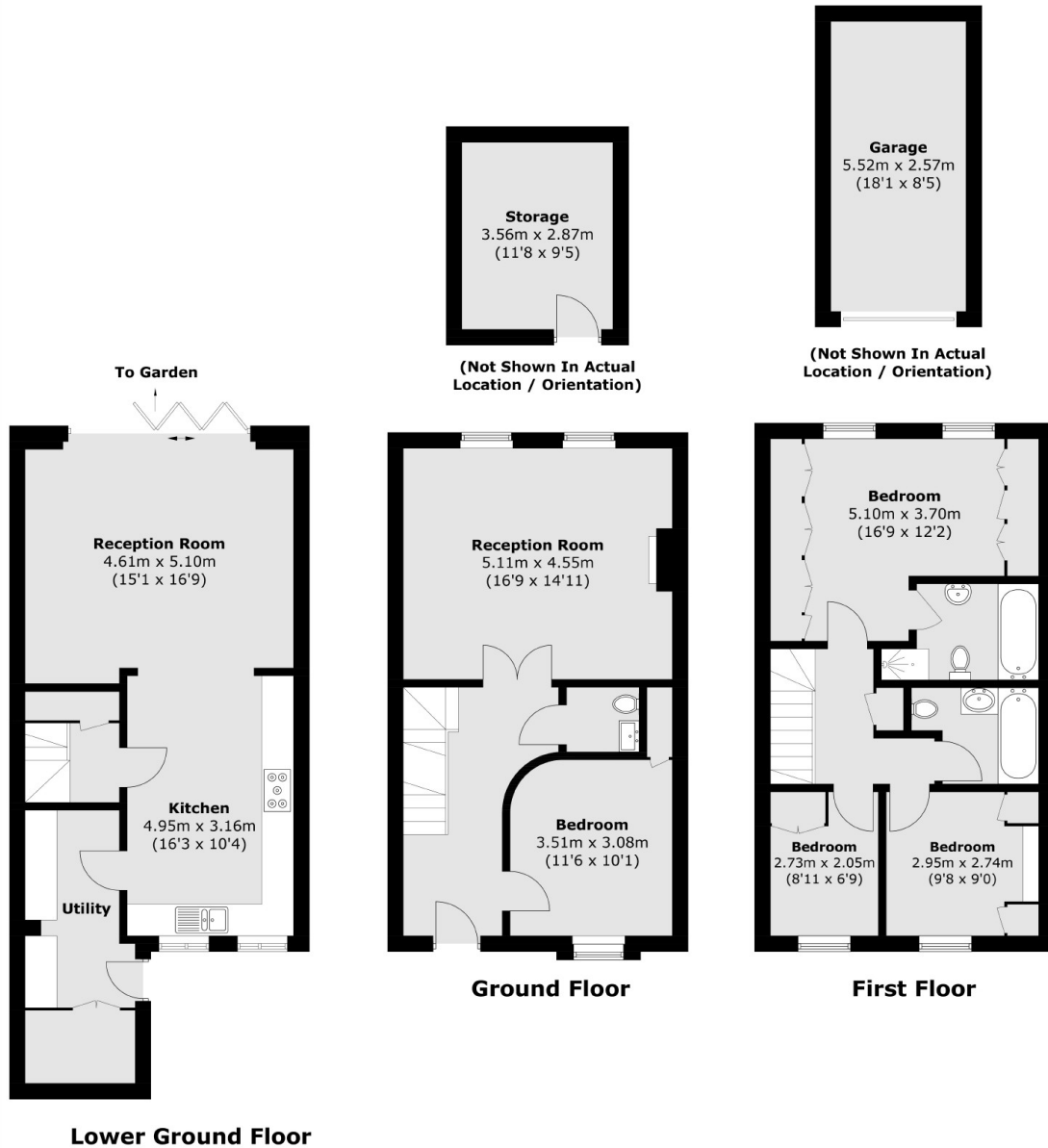
- Open Plan Kitchen
- One /Two Receptions
- Three/Four Bedrooms
- South Facing Garden
- Parking & Garage
- Boot Room/Laundry Room







Seaton Close, London, SW15



Total area (approx.): 150.3 sq. m (1,617.8 sq. ft)
Outbuildings: 24.5 sq. m (152.8 sq. ft)

Dexters

Putney
176 Putney High Street
London
SW15 1RS
Sales
020 8789 9999

Energy Rating: . We aim to make our particulars both accurate and reliable. However they are not guaranteed; nor do they form part of an offer or contract. If you require clarification on any points then please contact us, especially if you're traveling some distance to view. Please note that appliances and heating systems have not been tested and therefore no warranties can be given as to their good working order.

RICS Regulated
Estate Agent
and Letting Agent

dexters.co.uk