



Felsham Road, SW15

£5,000 Per calendar month

Dexters



Felsham Road, SW15

An exceptionally well presented double fronted Victorian home. With an open plan bespoke kitchen/dining room, four double bedrooms and a south west facing garden ideal for the growing family.

Felsham Road is an ideal location, a short walk to Lower Richmond Road with its bar, restaurants and coffee shops. There are a number of very good schools in the immediate location, with Putney High Street and mainline station a short walk away.

Features

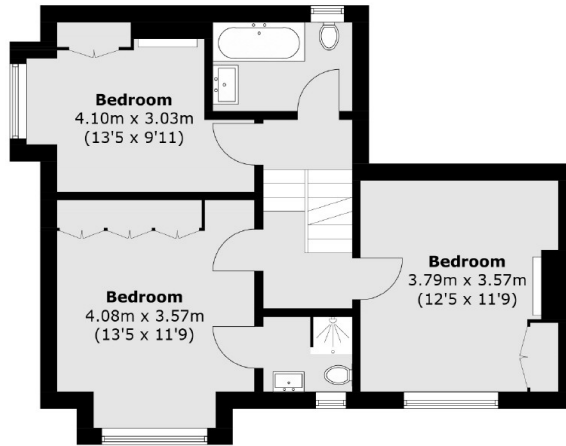
- Four Double Bedrooms
- End Of Terrace
- Excellent Condition
- Off Street Parking
- South West Facing Garden
- West Putney Location



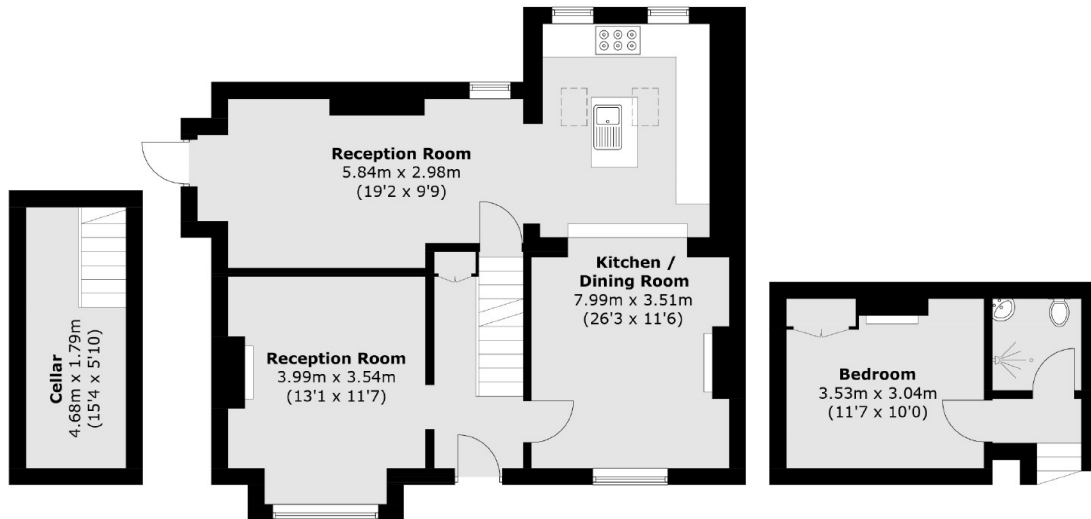




Felsham Road, London, SW15



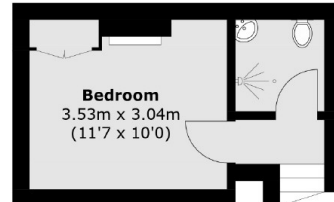
First Floor



Cellar

Ground Floor

Second Floor



Total area (approx.): 132.9 sq. m (1,430.5 sq. ft)
Cellar area (approx.): 8.5 sq. m (91.5 sq. ft)

Dexters

Putney
176 Putney High Street
London
SW15 1RS
Lettings
020 8789 9090

Energy Rating: D. We aim to make our particulars both accurate and reliable. However they are not guaranteed; nor do they form part of an offer or contract. If you require clarification on any points then please contact us, especially if you're traveling some distance to view. Please note that appliances and heating systems have not been tested and therefore no warranties can be given as to their good working order.

 **RICS** | Regulated
Estate Agent
and Letting Agent

[dexters.co.uk](https://www.dexters.co.uk)