



## Malthouse Passage, SW13

£2,395 Per calendar month

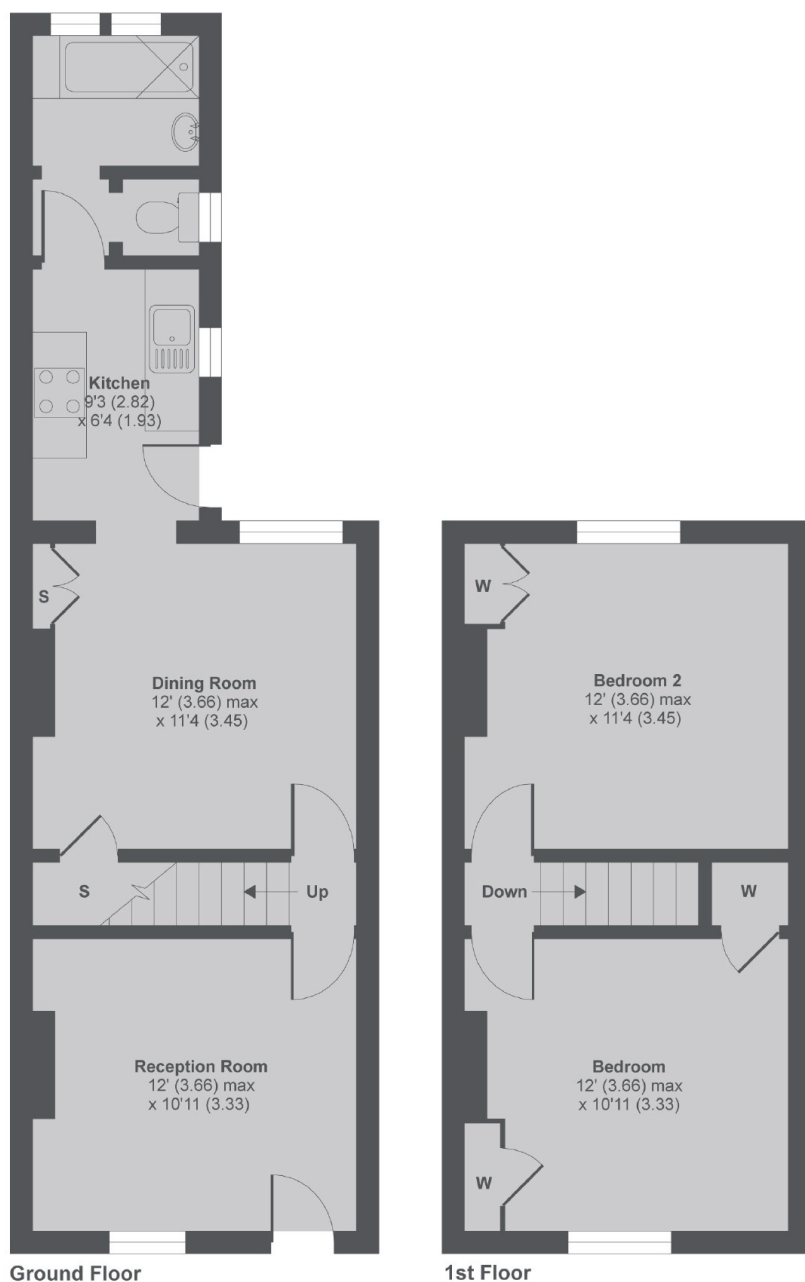
A two double bedroom Victorian cottage in the centre of Barnes Village. The cottage is in good condition throughout, neutrally decorated and maintains many of its original features like wood floors and a feature fireplace.

Malthouse Passage is ideally located just off The Terrace, close to Barnes Bridge station with its frequent services to Waterloo. If you enjoy good food and drink, The Bulls Head pub is just up the road.

### Features

- Two Double Bedrooms
- Two Reception Rooms
- Original Features
- Wooden Floors
- Separate Kitchen
- Patio Garden

# Malthouse Passage, London, SW13



## Malthouse Passage, SW13

MAIN HOUSE APPROX FLOOR AREA 728 SQ.FT 67.6 SQ.M

Copyright nichecom.co.uk 2017 Produced for Dexters REF : 180531

# Dexters

Putney  
176 Putney High Street  
London  
SW15 1RS  
Lettings  
020 8789 9090

Energy Rating: E. We aim to make our particulars both accurate and reliable. However they are not guaranteed; nor do they form part of an offer or contract. If you require clarification on any points then please contact us, especially if you're traveling some distance to view. Please note that appliances and heating systems have not been tested and therefore no warranties can be given as to their good working order.

 **RICS** | Regulated  
Estate Agent  
and Letting Agent

dexters.co.uk