



## Holford Way, SW15

£2,395 Per calendar month

In this popular private development, this two double bedroom, two bathroom apartment has a large open-plan reception room with a private balcony.

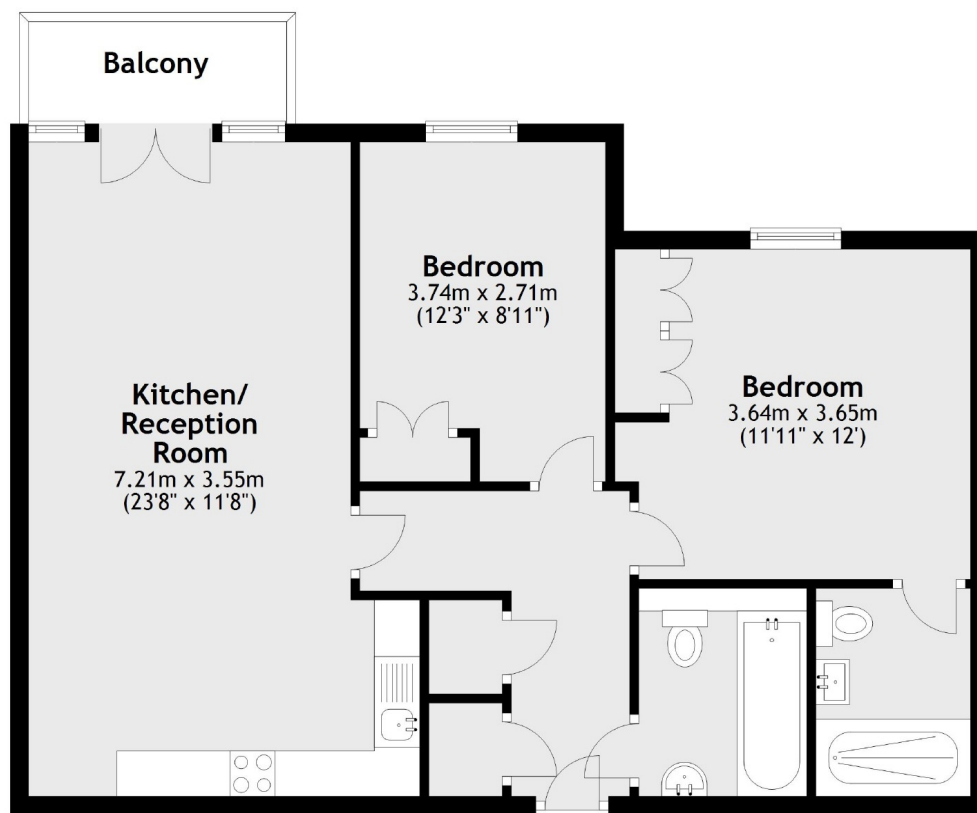
Queen Mary's Place is a modern development ideal for families, that has landscaped communal gardens and access to a residents gym.

### Features

- Two Double Bedrooms
- Two Bathrooms
- Private Balcony
- Modern Development
- Residents Gym
- Communal Gardens

# Holford Way, London, SW15

## Second Floor



Main area: Approx. 70.1 sq. metres (754.1 sq. feet)  
Plus balconies, approx. 3.5 sq. metres (37.5 sq. feet)

# Dexters

Putney  
176 Putney High Street  
London  
SW15 1RS  
Lettings  
020 8789 9090

Energy Rating: B. We aim to make our particulars both accurate and reliable. However they are not guaranteed; nor do they form part of an offer or contract. If you require clarification on any points then please contact us, especially if you're traveling some distance to view. Please note that appliances and heating systems have not been tested and therefore no warranties can be given as to their good working order.

 **RICS** | Regulated  
Estate Agent  
and Letting Agent

[dexters.co.uk](https://www.dexters.co.uk)