



Roehampton Lane, SW15

£599,999

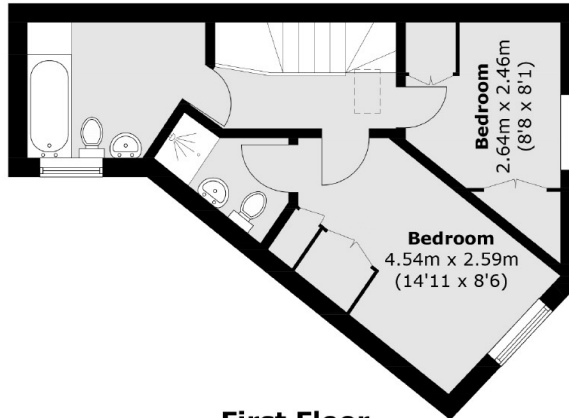
An extremely unique town house of almost 1000 sq ft arranged over three floors with a spacious reception, eat in kitchen, three bedrooms, three bathrooms and a south facing garden.

The property is tucked away in a small development on Roehampton Lane moments from the local High Street, University & Putney Heath. The property also benefits from excellent transport links to Kingston, Putney and Barnes and easy access to Queen Mary Hospital.

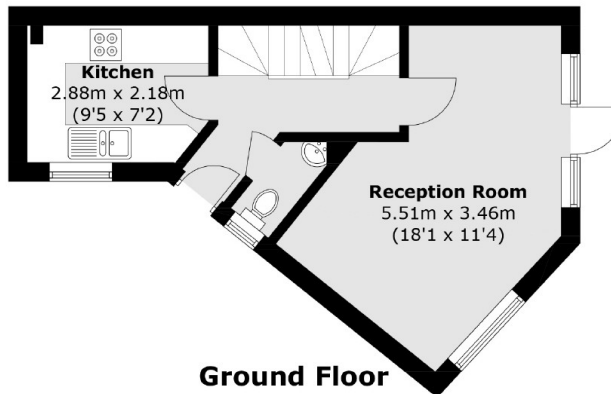
Features

- 917 sq ft
- Separate Kitchen
- Three Bedrooms
- Three Bathrooms & WC
- South Facing Garden
- No Chain

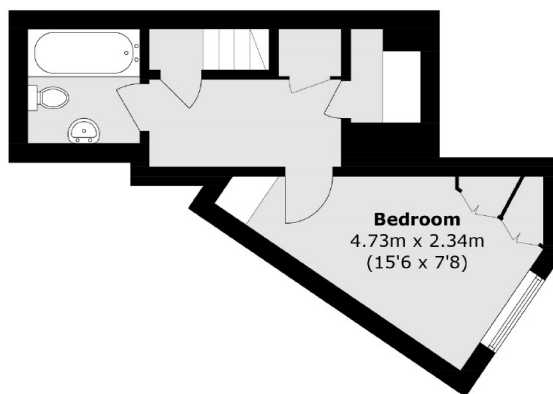
Roehampton Lane, London, SW15



First Floor



Ground Floor



Lower Ground Floor

Total area (approx.): 85.2 sq. m (917.1 sq. ft)