



Pettiward Close, SW15

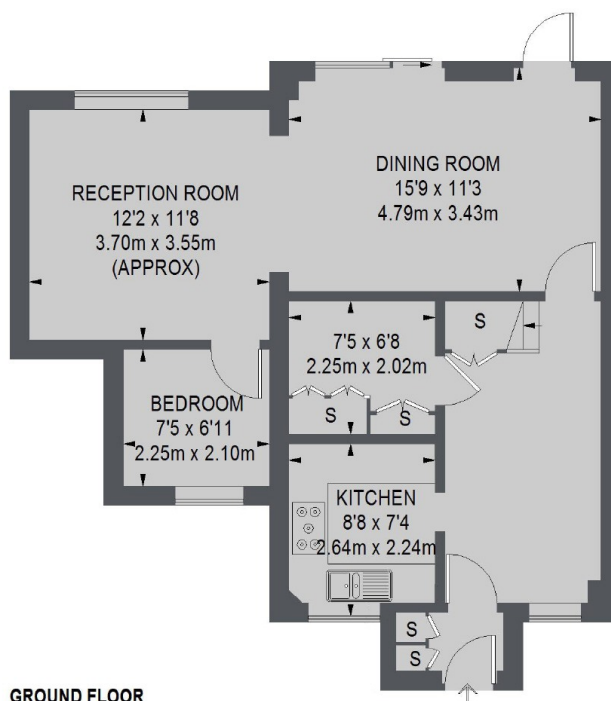
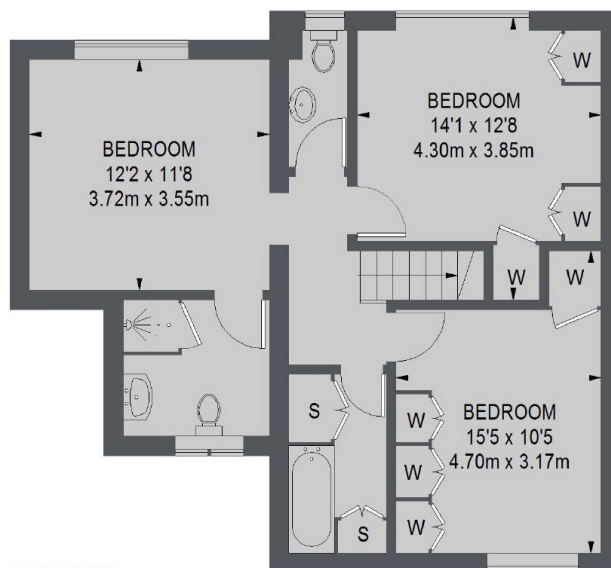
£3,250 Per calendar month

This three bedroom end of terrace house on a private family close in West Putney offers great space and off street parking. Over two floors, the house has a double reception room, a private garden, modern kitchen and two bathrooms.

Pettiward Close is moments away from Putney Leisure centre and within the catchment area for key schools whilst also being well located for all local amenities in addition to green spaces and transport links.

Features

Pettiward Close, London, SW15



TOTAL APPROX. FLOOR AREA
1294 SQ. FT. (120.24 SQ. M.)

Dexters

Putney
176 Putney High Street
London
SW15 1RS
Lettings
020 8789 9090

Energy Rating: C. We aim to make our particulars both accurate and reliable. However they are not guaranteed; nor do they form part of an offer or contract. If you require clarification on any points then please contact us, especially if you're traveling some distance to view. Please note that appliances and heating systems have not been tested and therefore no warranties can be given as to their good working order.

 **RICS** | Regulated
Estate Agent
and Letting Agent

[dexters.co.uk](https://www.dexters.co.uk)