



West Hill, SW15

£800,000

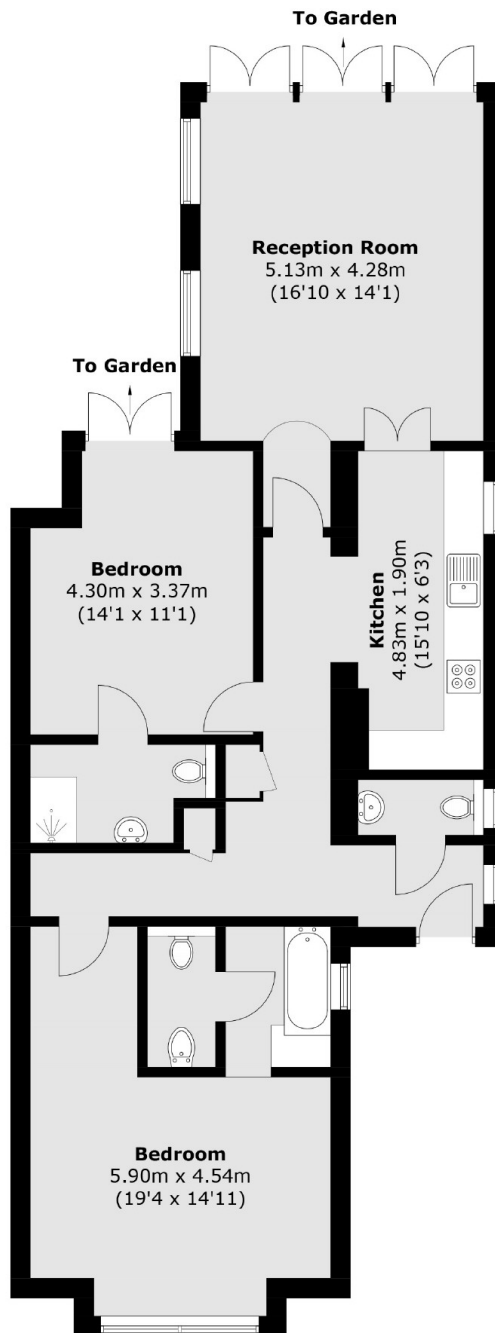
A beautifully presented, 1050 sq ft, two double bedroom, two bathroom period conversion set in a gorgeous detached Victorian Villa. The property benefits from its own front door that opens onto a large hall. Both bedrooms come off this hall and benefit from en-suite bathrooms. The living room offers very high ceilings and opens directly onto the large communal garden, with this being the only flat in the building with direct access. At the front of the property is also ample communal parking.

West Hill leads out from Wandsworth Town Centre towards Putney and the A3 and the property is not far from the junction with the Upper Richmond Road & Wandsworth High Street so ideal for easy access to all local amenities.

Features

- Own Front Door
- Two Bedrooms
- Two Bathrooms
- Separate Kitchen
- Shared Parking
- Communal Garden

West Hill, London, SW15



Total area (approx.): 97.6 sq. m (1,050.6 sq. ft)

Dexters

Putney
176 Putney High Street
London
SW15 1RS
Sales
020 8789 9999

Energy Rating: . We aim to make our particulars both accurate and reliable. However they are not guaranteed; nor do they form part of an offer or contract. If you require clarification on any points then please contact us, especially if you're traveling some distance to view. Please note that appliances and heating systems have not been tested and therefore no warranties can be given as to their good working order.

 **RICS** | Regulated
Estate Agent
and Letting Agent

[dexters.co.uk](https://www.dexters.co.uk)