



## Bessborough Road, SW15

£1,550 Per calendar month

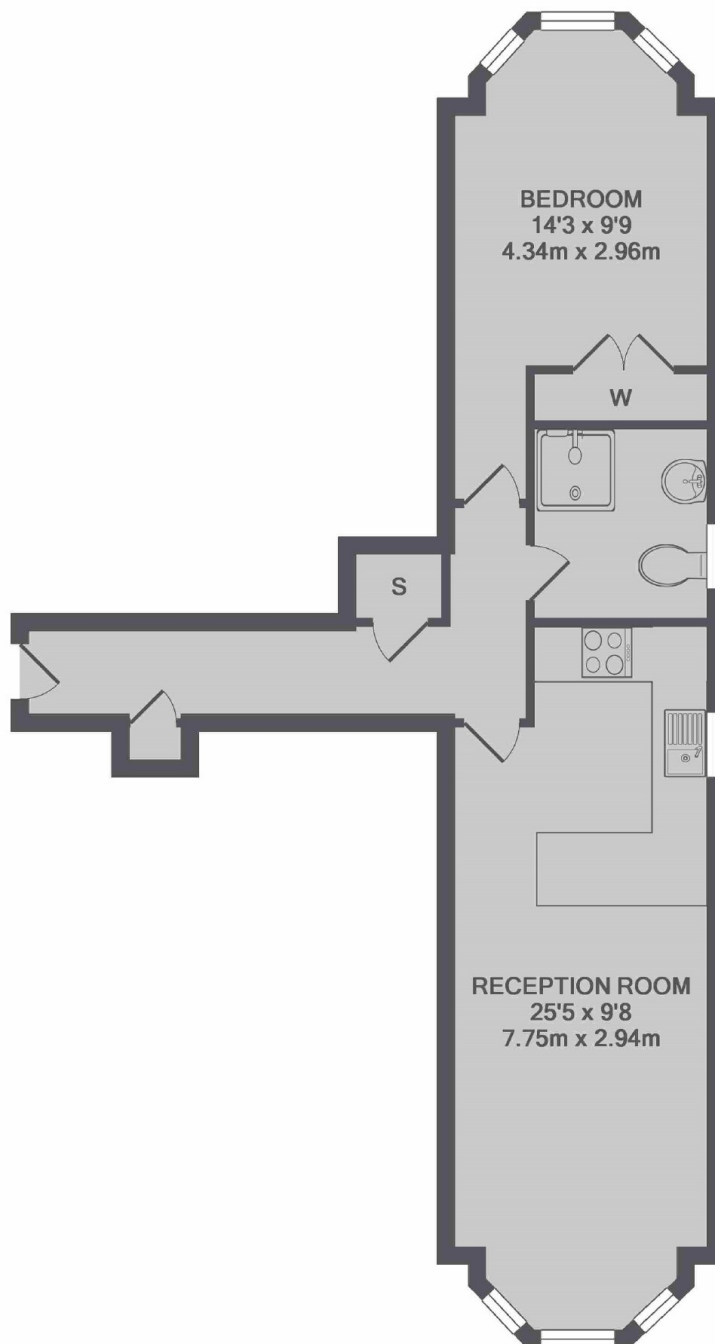
A well presented one bedroom first floor flat. Bright and spacious throughout this property has been finished to an excellent standard. With plenty of storage and an allocated parking space.

Bessborough Road is a short walk from Roehampton high street, giving a real village feel. There are extensive bus links providing access to Putney, Barnes and Kingston town centres.

### Features

- First Floor Flat
- Gated Development
- One Bedroom
- Bright and Spacious
- Storage
- Allocated Parking

# Bessborough Road, London, SW15



TOTAL APPROX. FLOOR AREA 505 SQ.FT. (46.9 SQ.M.)

## Dexters

Putney  
176 Putney High Street  
London  
SW15 1RS  
Lettings  
020 8789 9090

Energy Rating: C. We aim to make our particulars both accurate and reliable. However they are not guaranteed; nor do they form part of an offer or contract. If you require clarification on any points then please contact us, especially if you're traveling some distance to view. Please note that appliances and heating systems have not been tested and therefore no warranties can be given as to their good working order.

 **RICS** | Regulated  
Estate Agent  
and Letting Agent

[dexters.co.uk](https://www.dexters.co.uk)