

Smugglers Way, SW18

£575,000

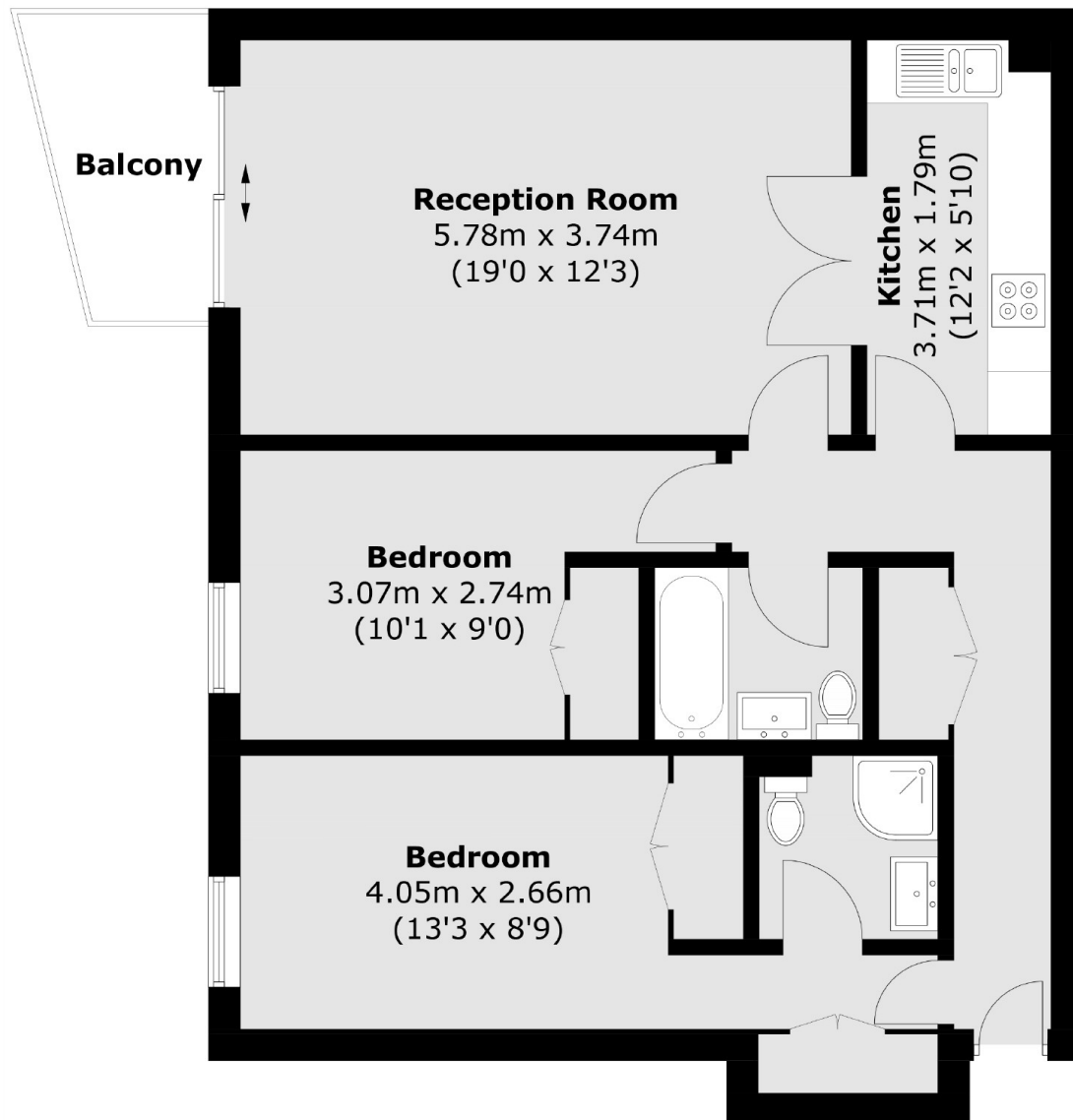
This two-bedroom, two-bathroom apartment located on the fifth floor offers spacious living, right on the river Thames. Both bedrooms offer a generous amount of space, both with fitted wardrobes, and the primary room having an en-suite shower. There is also a large and bright living room with sliding doors to the apartment's private balcony with direct views of the river. The modern 'U' shaped kitchen offers ample storage with fully integrated appliances and opens directly onto the living area. There is also access to the well-maintained common grounds and Thames pathways.

Compass House is part of the popular Riverside West development. There is convenient access to Wandsworth Town train station and the Thames Clipper service from the nearby Wandsworth Riverside Quarter pier. The development offers amenities including a 24 hour concierge and on site Virgin Active gym.

Features

- Two Bedrooms
- Two Bathrooms
- River Views
- Fifth Floor
- No Chain

Smugglers Way,
London, SW18



Total area (approx.): 73.3 sq. m (789.0 sq. ft)
Balcony area (approx.): 4.2 sq. m (45.2 sq. ft)

Dexters

Putney
176 Putney High Street
London
SW15 1RS
Sales
020 8789 9999

Energy Rating: . We aim to make our particulars both accurate and reliable. However they are not guaranteed; nor do they form part of an offer or contract. If you require clarification on any points then please contact us, especially if you're traveling some distance to view. Please note that appliances and heating systems have not been tested and therefore no warranties can be given as to their good working order.

RICS | Regulated
Estate Agent
and Letting Agent

dexters.co.uk