



West Hill, SW15

£725,000

Dexters



West Hill, London, SW15

A big ground floor apartment split over two floors with three bedrooms, two bathrooms, a WC and a beautiful open kitchen and living room.

The property was overhauled and upgraded by the current owner a short time ago and has the dual benefits of a period building and modern home. The wooden floors, high ceilings, bespoke fitted wardrobes and modern kitchen are some of the highlights.

Located at the top of West Hill, ideal for a commuter needing links back into central Putney or the A3 towards the South Coast. For those who love a Sunday walk, both Putney Heath and Wimbledon Common are within walking distance.

Features

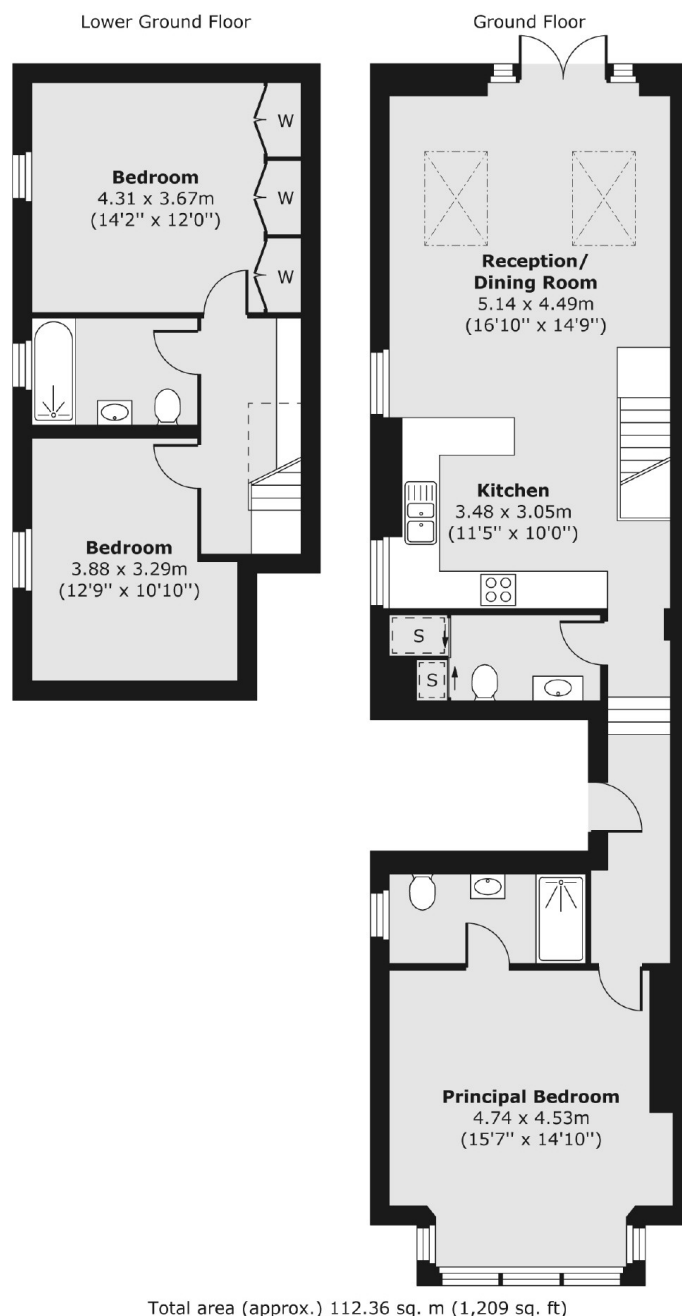
- Three Double Bedrooms
- No Onward Chain
- Excellent Condition
- High Ceilings
- Split Level
- Two Bathrooms







West Hill, London, SW15



Dexters

Putney
176 Putney High Street, Putney,
London, SW15 1RS

Sales
020 8789 9999

Energy Rating: C. We aim to make our particulars both accurate and reliable. However they are not guaranteed; nor do they form part of an offer or contract. If you require clarification on any points then please contact us, especially if you're traveling some distance to view. Please note that appliances and heating systems have not been tested and therefore no warranties can be given as to their good working order.

 **RICS** | Regulated
Estate Agent
and Letting Agent

[dexters.co.uk](https://www.dexters.co.uk)