



Wildcroft Road, SW15

£3,600 Per calendar month

Dexters



Wildcroft Road, SW15

A well presented and spacious apartment with four bedrooms is situated on the second floor (with a lift) of the sought after Wildcroft Manor. With its quiet surrounding's, the property benefits from two Bathrooms, neutral decor and access to a well maintained communal grounds. The property further benefits from heating and water included.

Wildcroft Manor was built in the 1930s where the previous manor, owned by Sir George Newnes, once stood. Putney Heath is widely regarded as the premier destination for suburban mansion flats.

Features

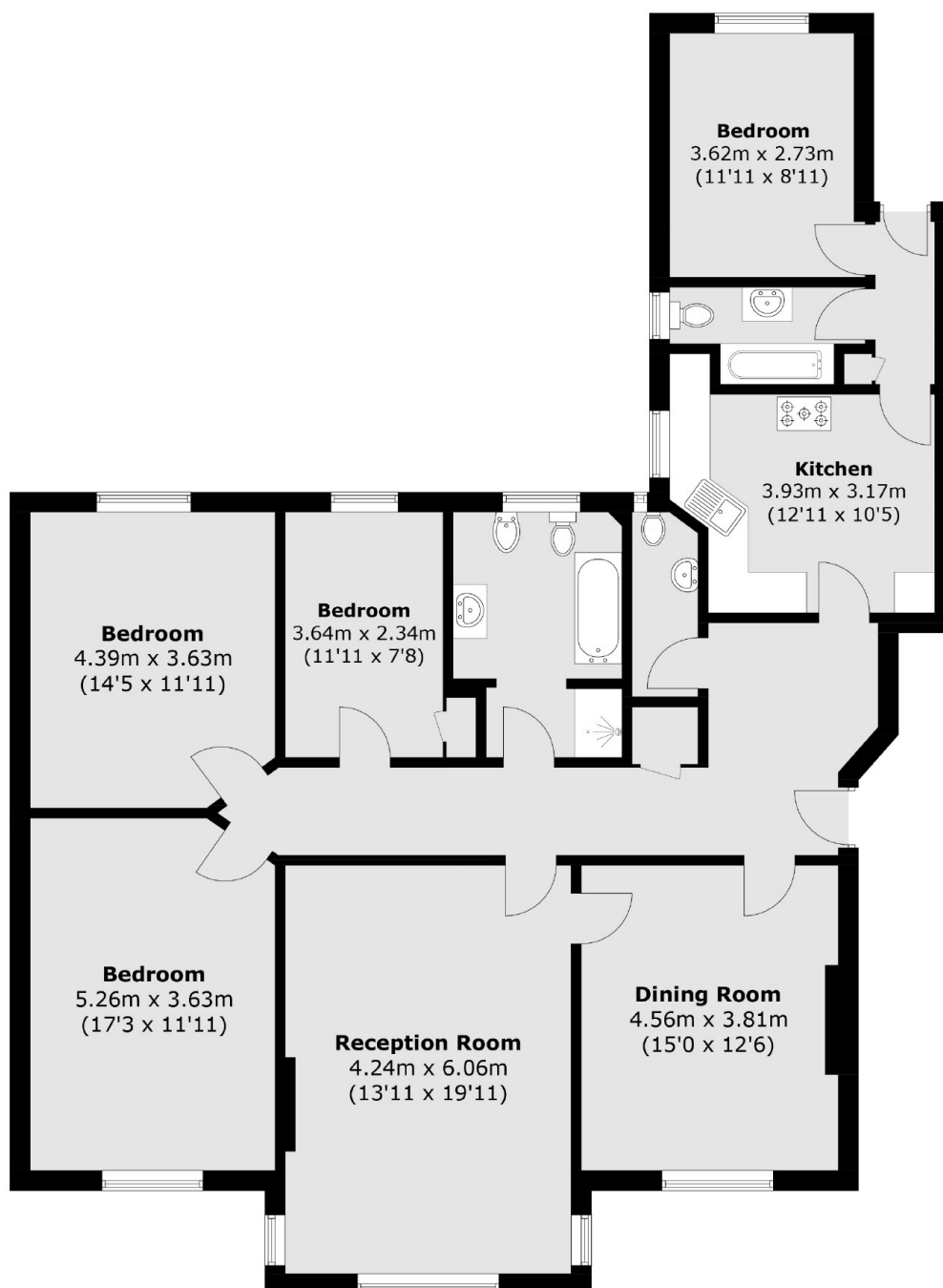
- Mansion Flat
- Four Double Bedrooms
- Two Reception Rooms
- Two Bathrooms
- Lift Access
- Communal Grounds







Wildcroft Road, London, SW15



Total area (approx.): 151.7 sq. m (1632.9 sq. ft)

Dexters

Putney
176 Putney High Street
London
SW15 1RS
Lettings
020 8789 9090

Energy Rating: C. We aim to make our particulars both accurate and reliable. However they are not guaranteed; nor do they form part of an offer or contract. If you require clarification on any points then please contact us, especially if you're traveling some distance to view. Please note that appliances and heating systems have not been tested and therefore no warranties can be given as to their good working order.

 **RICS** | Regulated
Estate Agent
and Letting Agent

[dexters.co.uk](https://www.dexters.co.uk)