

Mapleton Crescent, SW18

£615,000

A stylish three bedroom, two bathroom apartment with amazing views on the 15th floor of a luxurious modern development in the heart of Wandsworth.

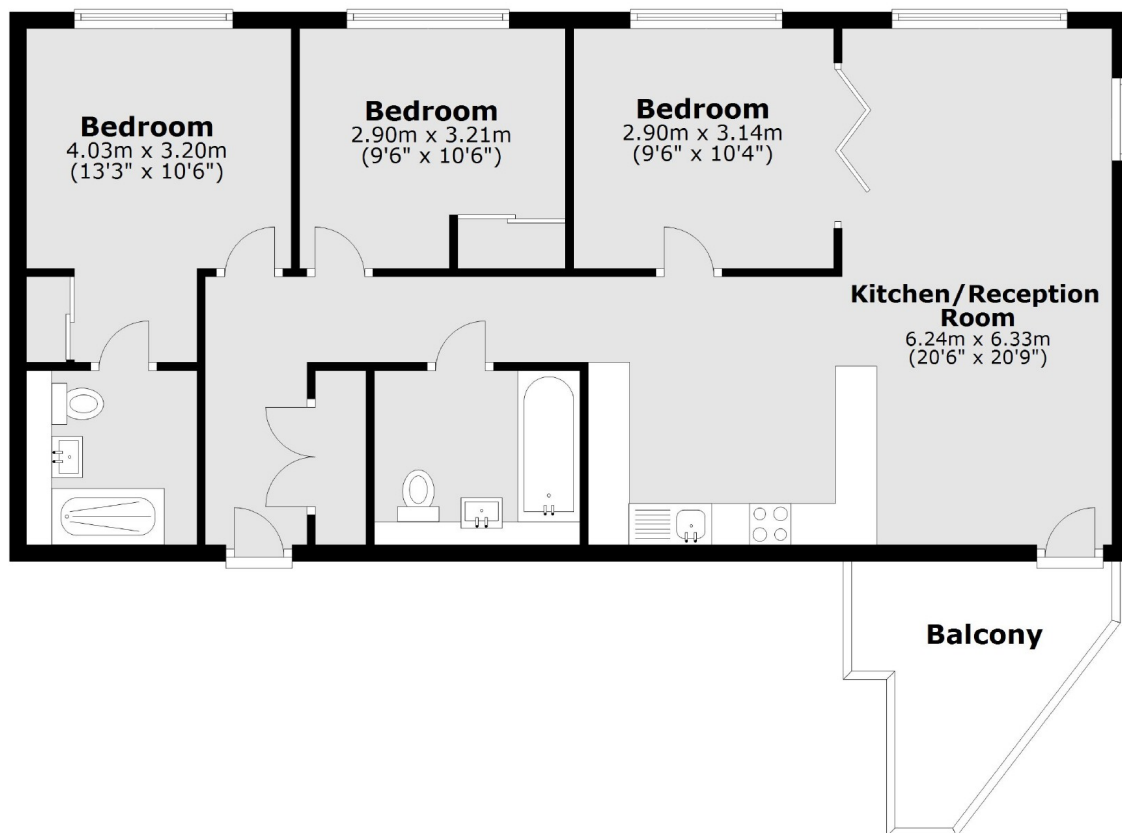
Mapleton Crescent is located by the Southside Shopping Centre in the very heart of Wandsworth Town Centre by King George's park & the River Wandle.

Features

- 900 sq ft
- 21ft Open Plan Reception
- Three Bedrooms
- Two Bathrooms
- Chain Free
- EWS1 Compliant

Mapleton Crescent, London, SW18

Fifteenth Floor



Main area: Approx. 81.8 sq. metres (881.0 sq. feet)
Plus balconies, approx. 7.0 sq. metres (75.8 sq. feet)