



Alton Road, SW15

£450,000

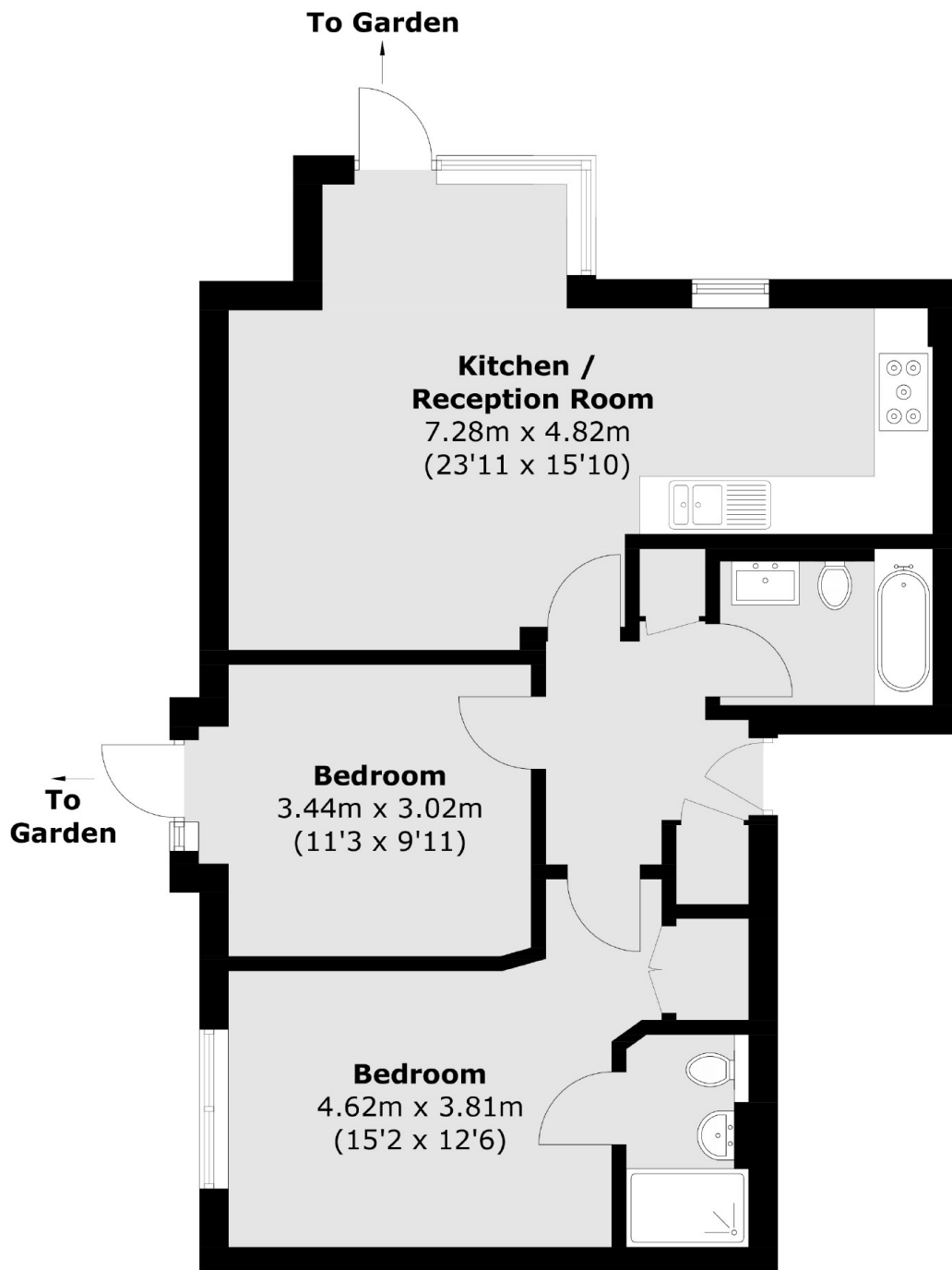
A bright and spacious two double bedroom apartment. There is a well proportioned open plan kitchen/ living room finished to an excellent standard. The property further benefits from Parking and outdoor space.

Alton Road runs off Roehampton Lane and is therefore a short walk from the wide open spaces of Putney Heath and Wimbledon Common. The flat is also a short walk from Roehampton High Street, which has an abundance of shops, including a local Waitrose. There are also numerous buses with swift access to Putney, Barnes, and beyond.

Features

- Allocated Parking
- Private Outdoor Space
- Two Bedrooms
- Two Bathrooms
- High Specification
- Open Plan Kitchen Living area

Alton Road, London, SW15



Total area (approx.): 64.1 sq. m (690.0 sq. ft)

Dexters

Putney
176 Putney High Street
London
SW15 1RS
Sales
020 8789 9999

Energy Rating: B. We aim to make our particulars both accurate and reliable. However they are not guaranteed; nor do they form part of an offer or contract. If you require clarification on any points then please contact us, especially if you're traveling some distance to view. Please note that appliances and heating systems have not been tested and therefore no warranties can be given as to their good working order.

 **RICS** | Regulated
Estate Agent
and Letting Agent

[dexters.co.uk](https://www.dexters.co.uk)