



## Hawkesbury Road, SW15

### £425,000

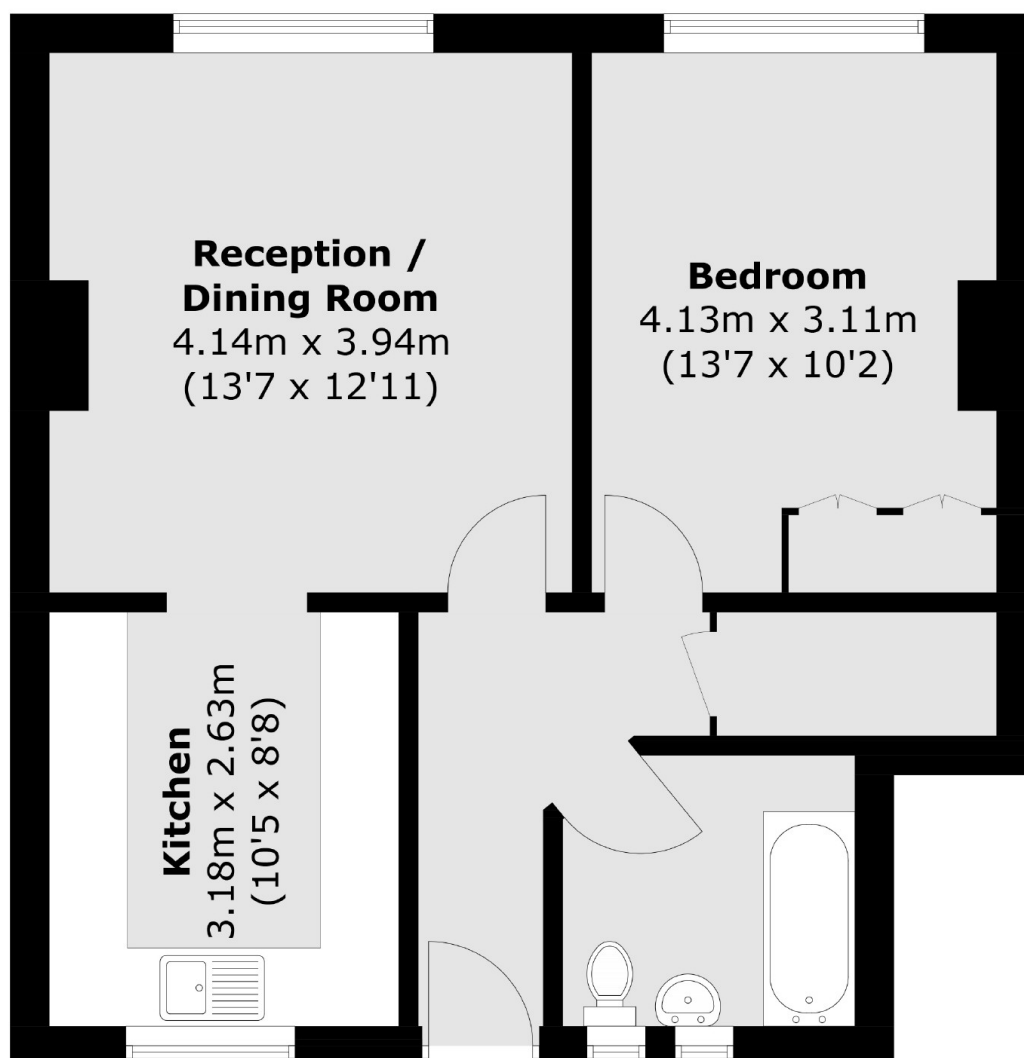
This ground-floor flat is presented in fantastic condition and benefits from a private south-facing garden and its own front door. With low service charges and council tax, the flat is ideal for a first time buyer.

Hawkesbury Road is part of the Dover House Estate, which was created in the 1920s for the benefit of soldiers returning from WW1. The road is a quiet residential street towards the Putney Heath end of the estate so ideal for easy access onto Richmond Park and Wimbledon Common.

### Features

- Private Garden
- One Bedroom
- Own Front Door
- High Spec
- Ground Floor
- 1920s Build

# Hawkesbury Road, London, SW15



Total area (approx.): 52.1 sq. m (560.8 sq. ft)

## Dexters

Putney  
176 Putney High Street  
London  
SW15 1RS  
Sales  
020 8789 9999

Energy Rating: . We aim to make our particulars both accurate and reliable. However they are not guaranteed; nor do they form part of an offer or contract. If you require clarification on any points then please contact us, especially if you're traveling some distance to view. Please note that appliances and heating systems have not been tested and therefore no warranties can be given as to their good working order.

 **RICS** | Regulated  
Estate Agent  
and Letting Agent

[dexters.co.uk](https://dexters.co.uk)