



## West Hill, SW15

### £650,000

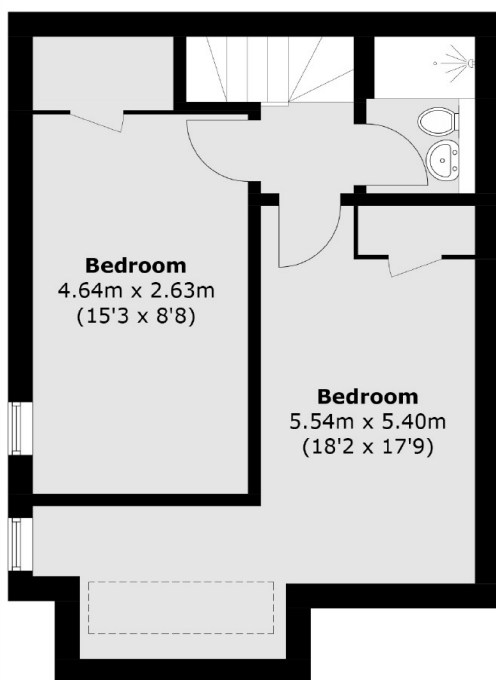
A beautifully presented circa 800 sq ft two double bedroom conversion flat arranged over two floors of a gorgeous detached Victorian Villa nestled between Putney & Wandsworth.

West Hill leads out from Wandsworth Town Centre towards Putney and the A3 and the property is not far from the junction with the Upper Richmond Road & Wandsworth High Street so ideal for easy access to all local amenities.

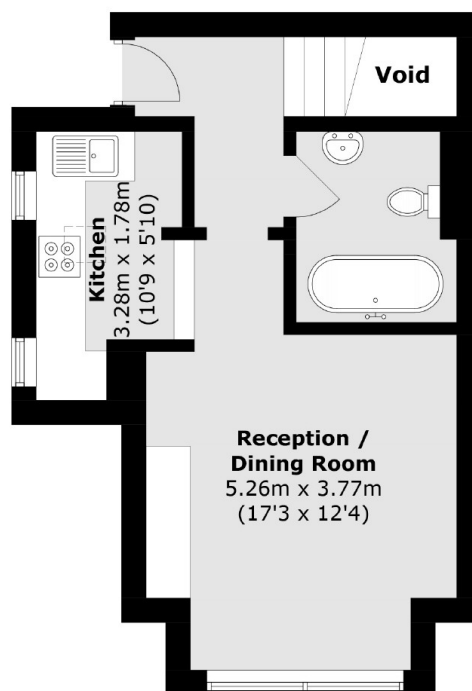
### Features

- Arranged over Two Floors
- Two Bathrooms
- Separate Kitchen
- Own Front Door
- Shared Parking
- Mature Communal Garden

# West Hill, London, SW15



**Lower Ground Floor**



**Ground Floor**

Total area (approx.): 70.2 sq. m (755.6 sq. ft)  
(Excluding Void)

## Dexters

Putney  
176 Putney High Street  
London  
SW15 1RS  
Sales  
020 8789 9999

Energy Rating: . We aim to make our particulars both accurate and reliable. However they are not guaranteed; nor do they form part of an offer or contract. If you require clarification on any points then please contact us, especially if you're traveling some distance to view. Please note that appliances and heating systems have not been tested and therefore no warranties can be given as to their good working order.

 **RICS** | Regulated  
Estate Agent  
and Letting Agent

[dexters.co.uk](https://www.dexters.co.uk)