

## West Hill, SW15

### £699,999

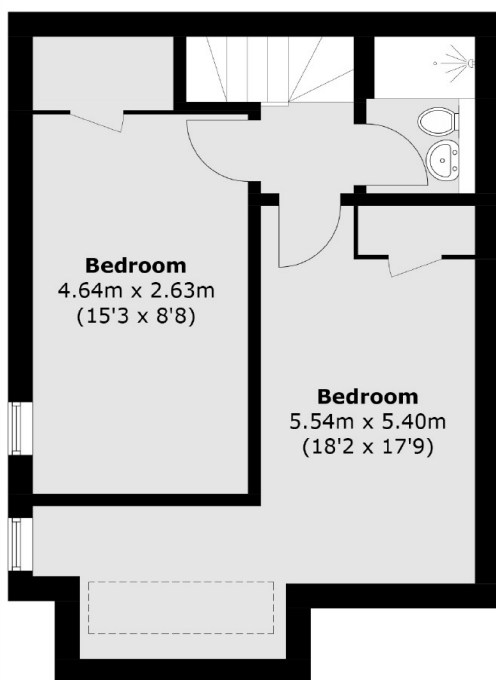
A beautifully presented circa 800 sq ft two double bedroom conversion flat arranged over two floors of a gorgeous detached Victorian Villa nestled between Putney & Wandsworth.

West Hill leads out from Wandsworth Town Centre towards Putney and the A3 and the property is not far from the junction with the Upper Richmond Road & Wandsworth High Street so ideal for easy access to all local amenities.

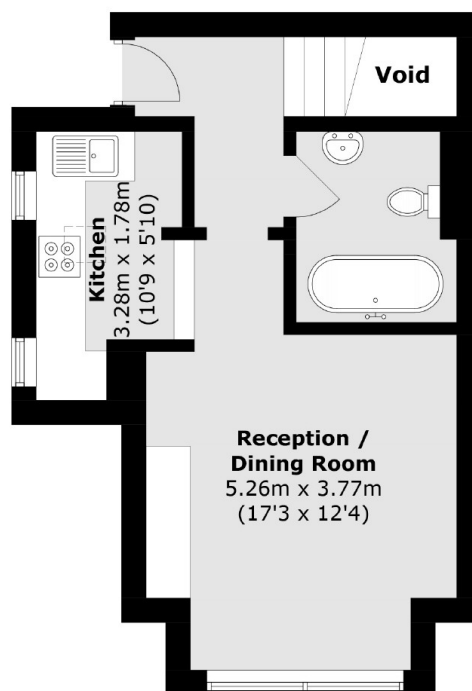
### Features

- Arranged over Two Floors
- Two Bathrooms
- Separate Kitchen
- Own Front Door
- Shared Parking
- Mature Communal Garden

# West Hill, London, SW15



**Lower Ground Floor**



**Ground Floor**

Total area (approx.): 70.2 sq. m (755.6 sq. ft)  
(Excluding Void)