

## Buckhold Road, SW18

### £355,000

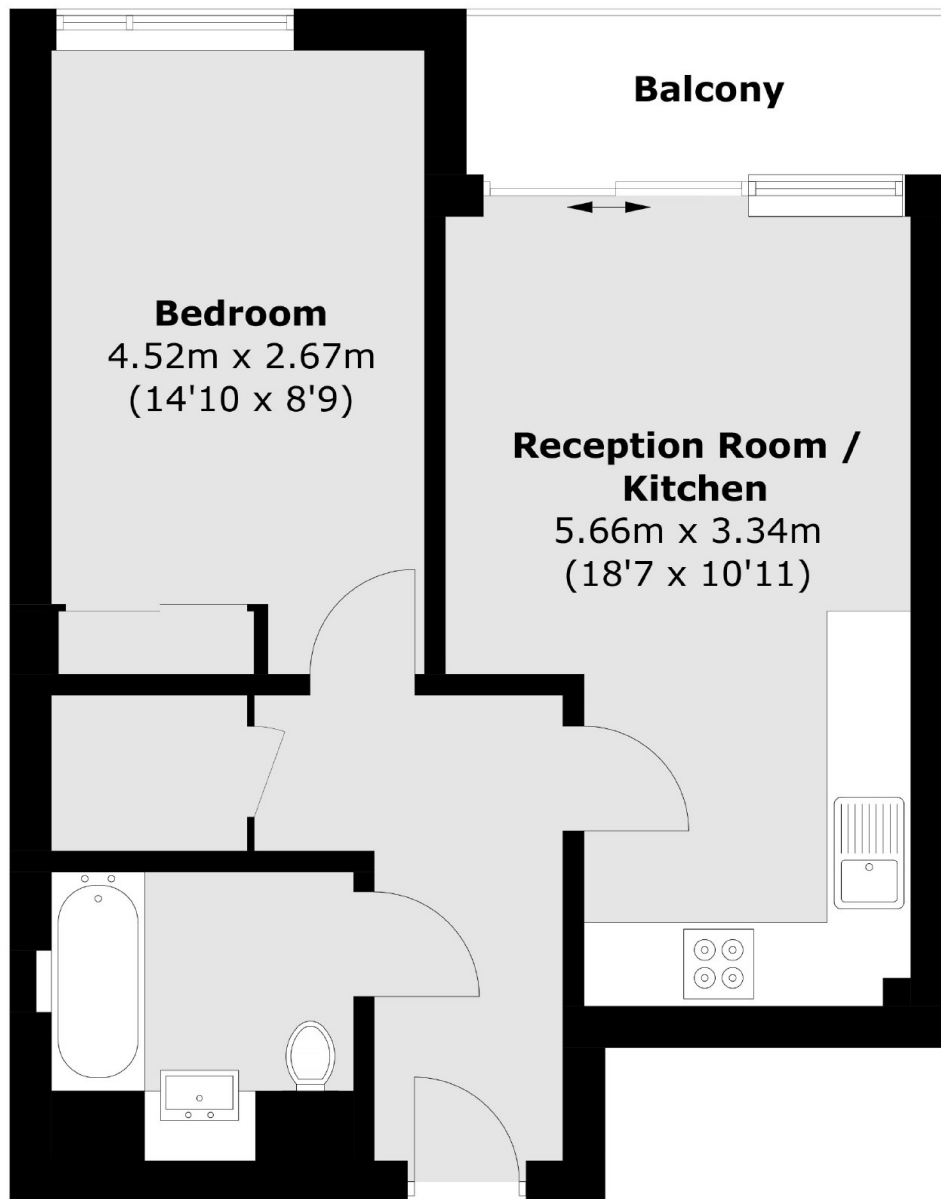
A modern one double bedroom apartment located in one of the most sought after modern developments in the heart of Wandsworth Town Centre.

The Filaments building is located in the centre of Wandsworth opposite the Southside Shopping Centre and only moments away from King Georges, Wandsworth Park & The Thames.

### Features

- Open Plan
- Double Bedroom
- Good Views
- Balcony
- Close to the River
- No Chain

# Buckhold Road, London, SW18



Total area (approx.): 42.5 sq. m (457.5 sq. ft)  
Balcony : 3.9 sq. m (42.0 sq. ft)

## Dexters

Putney  
176 Putney High Street  
London  
SW15 1RS  
Sales  
020 8789 9999

Energy Rating: B. We aim to make our particulars both accurate and reliable. However they are not guaranteed; nor do they form part of an offer or contract. If you require clarification on any points then please contact us, especially if you're traveling some distance to view. Please note that appliances and heating systems have not been tested and therefore no warranties can be given as to their good working order.

 **RICS** | Regulated  
Estate Agent  
and Letting Agent

[dexters.co.uk](https://www.dexters.co.uk)