



## West Hill, SW18

### £499,999

Well-presented two-bedroom split-level flat in a Georgian Grade II listed building. Features a spacious layout, south-facing balcony, and a 125-year lease from 2007. Combines historic character with modern convenience, ideally located near amenities and transport links.

Located in West Hill, SW18, this area offers easy access to East Putney and Southfields stations. The flat is also a short distance to Wandsworth Town station and has direct bus connections to Richmond, Clapham Junction, Clapham Common, and Victoria Station. Wandsworth town centre's shops and cafes, and green spaces like Wandsworth Common and King George's Park - balancing urban convenience with nearby outdoor areas.

### Features

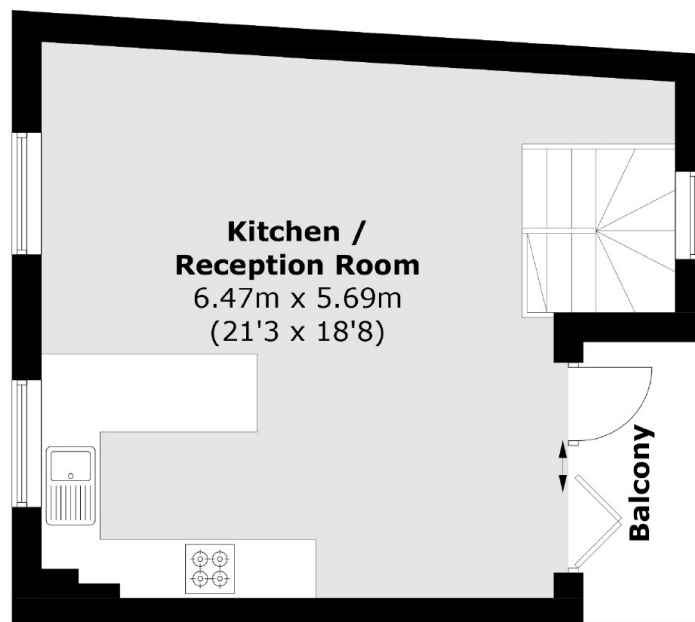
Two-bedroom

Split-level

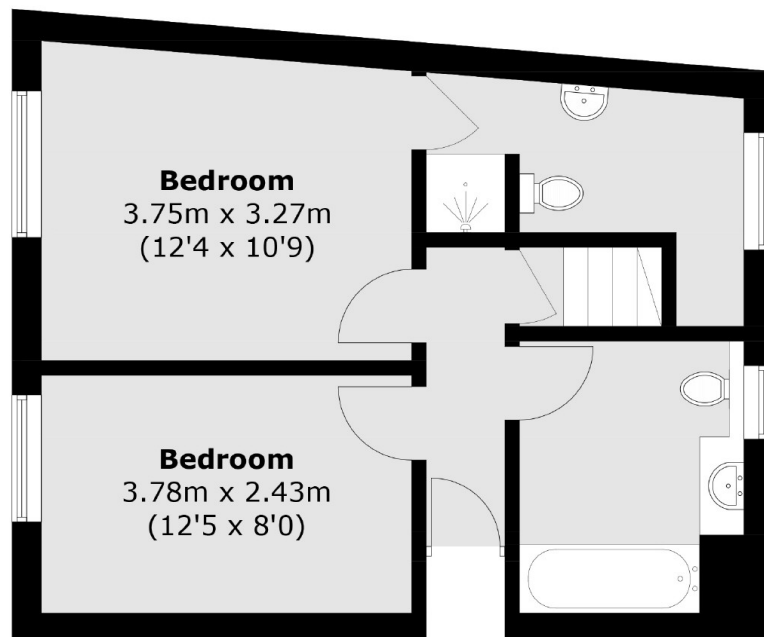
South-facing balcony  
Grade II listed

Long Lease  
Georgian charm

# West Hill, London, SW18



## Second Floor



## First Floor

Total area (approx.): 71.3 sq. m (767.5 sq. ft)  
Balcony area : 3.4 sq. m (36.6 sq. ft)