



Kersfield Road, SW15

£560,000

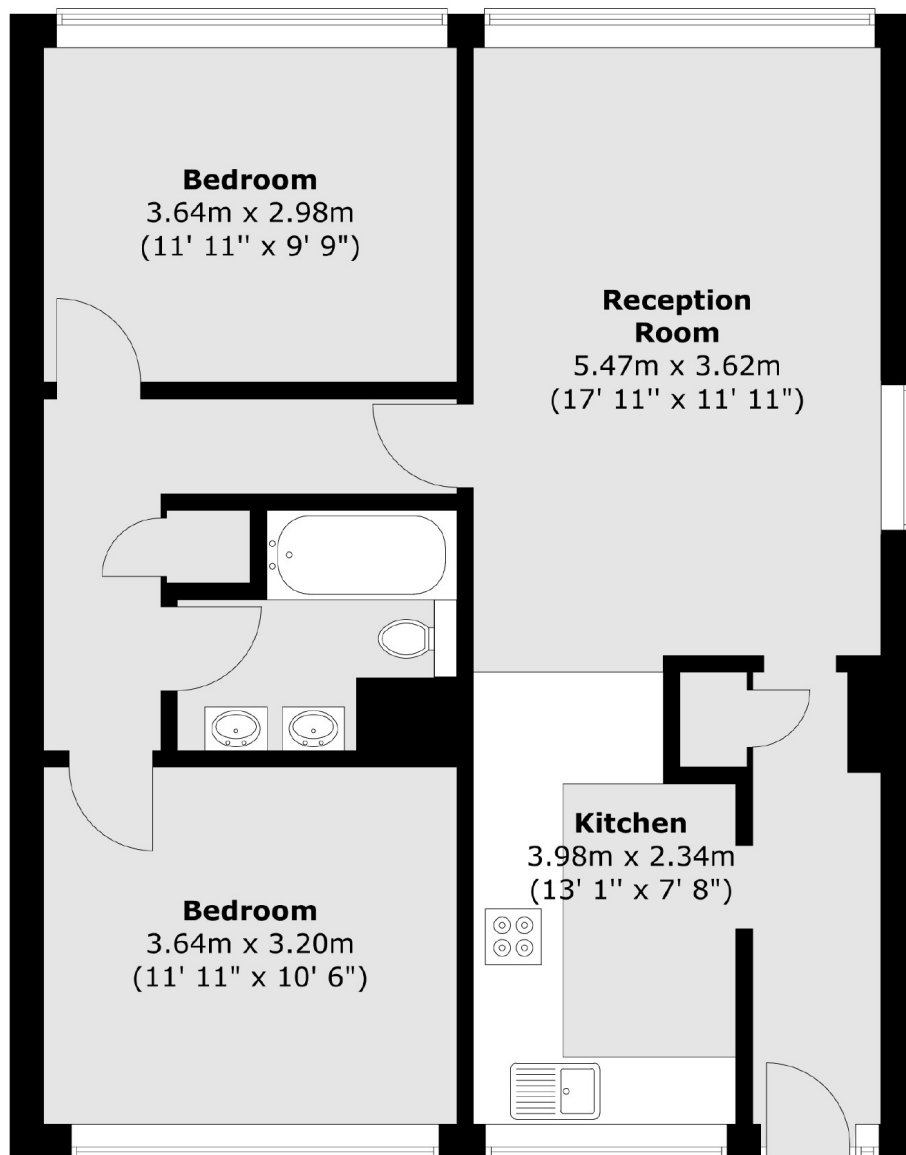
A two bedroom, ground floor maisonette. This property offers a bright reception space with a semi open-plan kitchen. There are two double bedrooms, both with ample room for wardrobes and a modern bathroom. The property also benefits from well-maintained westerly facing communal gardens.

Garden Royal is on Kersfield Road, just off Putney Hill. The property is ideally situated within walking distance of Wimbledon Common and offers excellent access to transport links, including Putney mainline train station, East Putney Underground station, and major bus routes. The A3 provides easy access to routes in and out of London.

Features

- Two Bedrooms
- Chain Free
- Share of Freehold
- Own Front Door
- Off Street Parking
- Communal Gardens

Kersfield Road, London, SW15



Total area (approx.) : 72.5 sq. m (780 sq. ft)