



**Wildcroft Road, SW15**

**£950,000**

**Dexters**



## Wildcroft Road, SW15

A large apartment with four bedrooms in great condition on the second floor (with a lift) of Wildcroft Manor. The flat is quiet, bright & located close to Putney Heath & Richmond Park.

Wildcroft Manor was built in the 1930s where the previous manor, owned by Sir George Newnes, once stood. Putney Heath is widely regarded as the premier destination for suburban mansion flats.

### Features

- Approx. 1,659 sq.ft
- Four Bedrooms
- Two Reception Rooms
- Two Bathrooms
- Second Floor
- 1930s Mansion



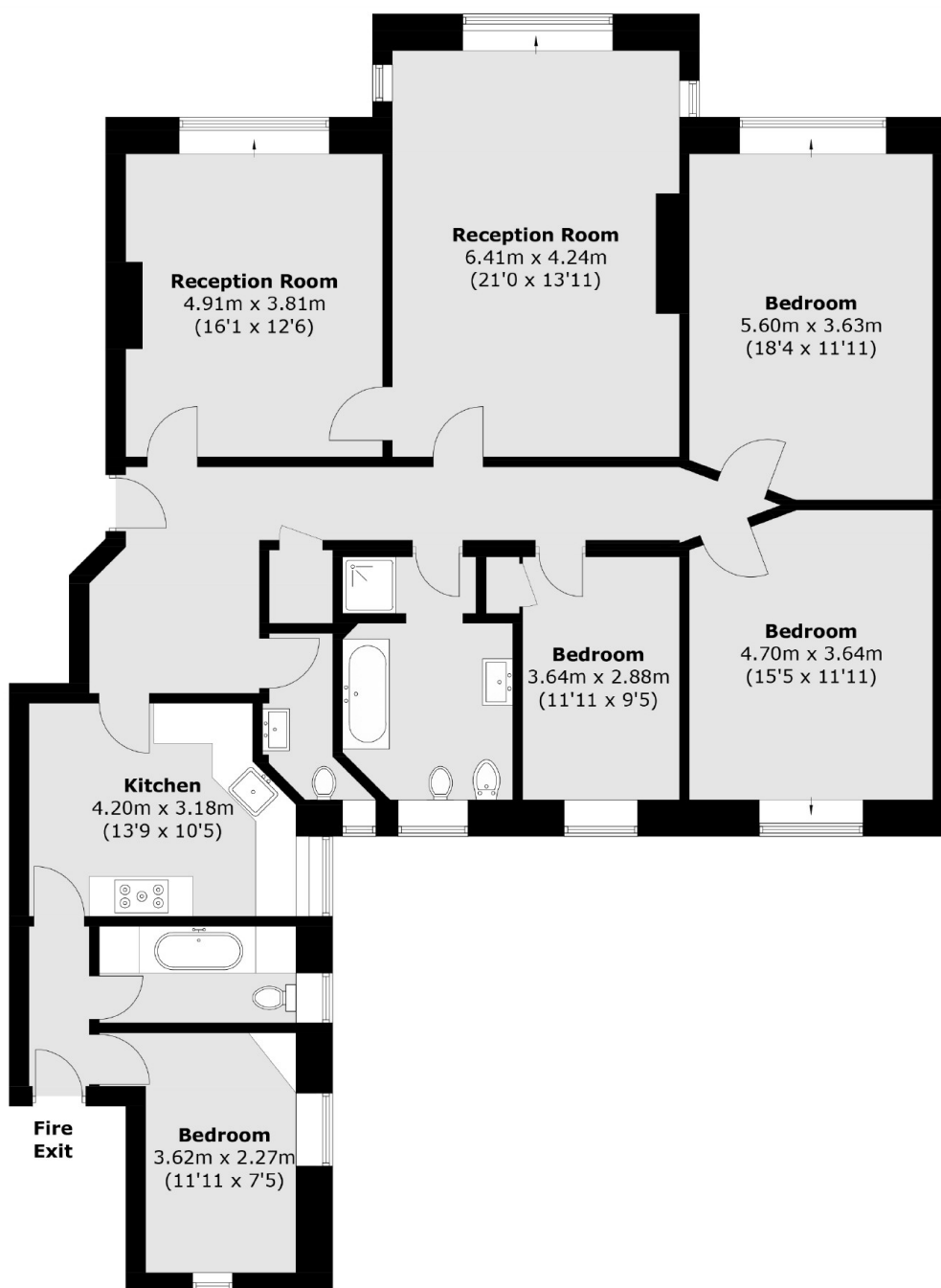








# Wildcroft Road, London, SW15



## Second Floor

Total area (approx.): 154.1 sq. m (1658.7 sq. ft)

# Dexters

Putney  
176 Putney High Street  
London  
SW15 1RS  
Sales  
020 8789 9999

Energy Rating: C. We aim to make our particulars both accurate and reliable. However they are not guaranteed; nor do they form part of an offer or contract. If you require clarification on any points then please contact us, especially if you're traveling some distance to view. Please note that appliances and heating systems have not been tested and therefore no warranties can be given as to their good working order.

 **RICS** | Regulated  
Estate Agent  
and Letting Agent

dexters.co.uk