



Putney Bridge Road, SW18

£625,000

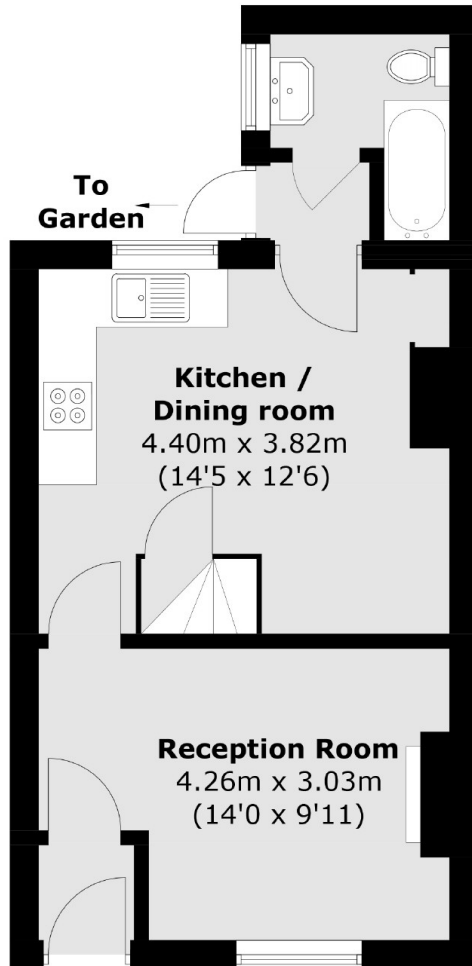
This freehold Victorian cottage with two bedrooms is close to Wandsworth Town. Part of a small cul-de-sac with just four houses, the house is unmodernised but has the potential to extend (subject to planning) and a great sized garden. The ground floor offers a good sized living room and eat in kitchen with access onto a private garden. The first floor consists of two large double bedrooms with ample storage space.

Bush Cottages is very close to Wandsworth Town and East Putney. Wandsworth Park is just up the road, alongside the river Thames. The Southside Shopping Centre is just a short walk and has numerous gyms, cafés, shops and restaurants.

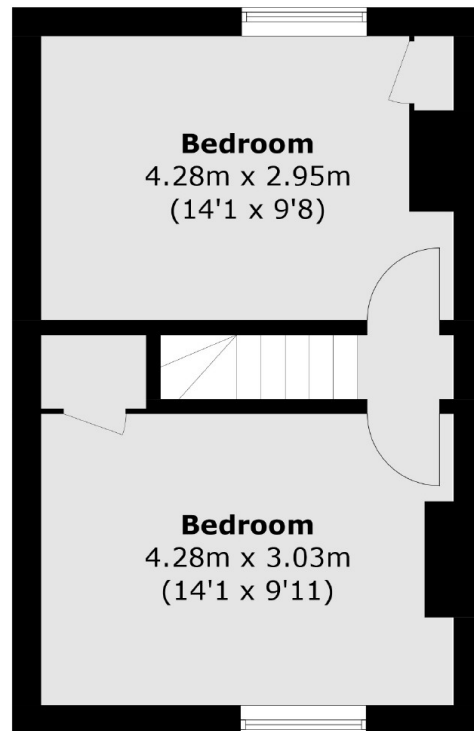
Features

- Freehold
- Victorian House
- Two Bedrooms
- Garden
- Unmodernised
- Chain Free

Putney Bridge Road, London, SW18



Ground Floor



First Floor

Total area (approx.): 64.1 sq. m (689.9 sq. ft)