



Erpingham Road, SW15
£1,500,000

Dexters



Erpingham Road, SW15

A four bedroom end of terrace family home with an abundance of potential located in one of Lower West Putneys most highly sought after streets.

The property sits at the end of a very pretty Victorian terrace of bay fronted homes and benefits from having side access. On the ground floor there is a double reception room and an un extended eat in kitchen breakfast room which, subject to planning could be extended into the side return.

On the first floor there are three well proportioned double bedrooms and the main family bathroom with a further bedroom and bathroom occupying the top floor.

Erpingham Road is a beautiful residential street made up of mainly period homes and located between Putney & Barnes so ideal for easy access into the town centre, both commons, tube & overground & a number of highly regarded local schools.

Features

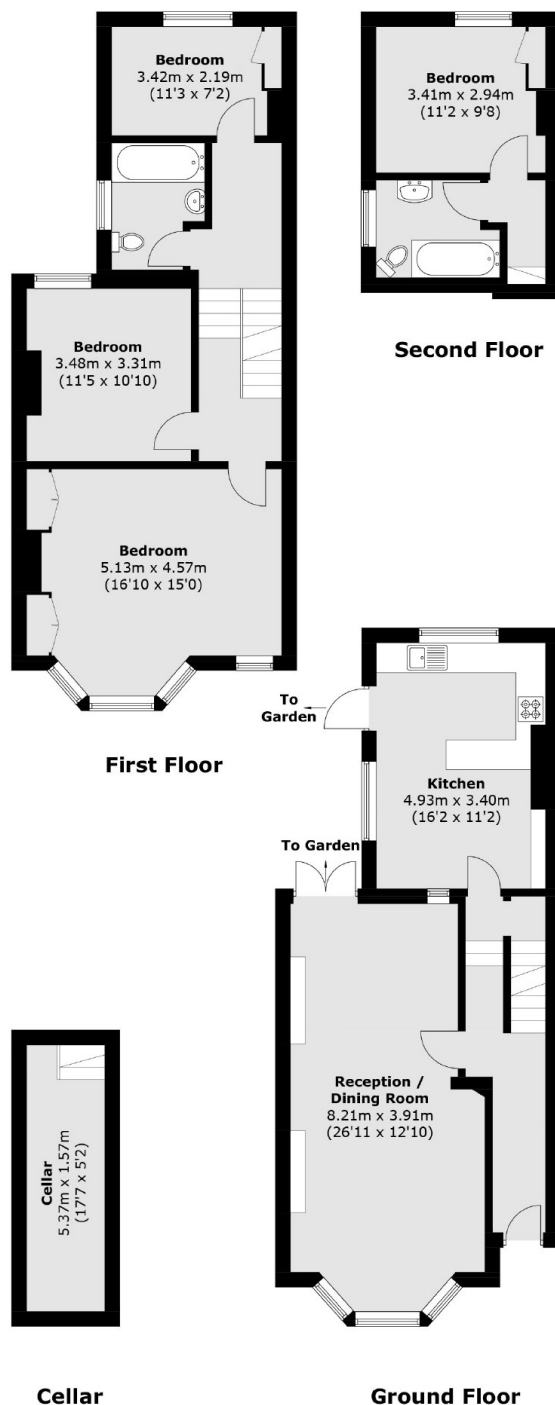
- Prime Location
- Potential to Extend (STP)
- Double Reception
- Four Double Bedrooms
- Good Size Garden
- No Chain







Erpingham Road, London, SW15



Total area (approx.): 140.3 sq. m (1,510.1 sq. ft)
(Including Cellar)