



Angel Mews, SW15
£1,100,000

Dexters



Angel Mews, SW15

A four bedroom end of terrace family home occupying the end plot within a very pretty & gated mews development tucked away behind the cobbled Roehampton High Street.

This property is in need of modernisation but offers a wealth of potential. On the ground floor there is a well proportioned entrance hall with a guest cloakroom and two large storage cupboards, spacious reception with conservatory, formal dining room and a fitted kitchen. On the first floor there are four bedrooms, two with en suites and a further family bathroom.

Further features include a single garage and off street parking for at least one car. Also worth highlighting is that subject to the required consents one could re configure the internal layout and may also be able to further extend the property or even convert the garage.

Angel Mews is a secure development very close to the open spaces of both Putney Heath and the glorious Richmond Park. The property also benefits from excellent transport links to Kingston, Putney and Barnes and easy access to Queen Mary Hospital.

Features

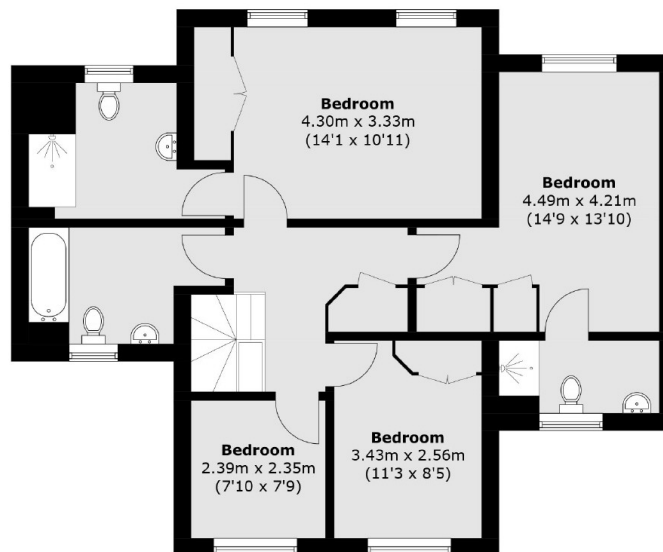
- 1600 sq ft
- Four Bedrooms
- Two/Three Receptions
- Three Bathrooms & WC
- Garage & Off Street Parking
- No Chain



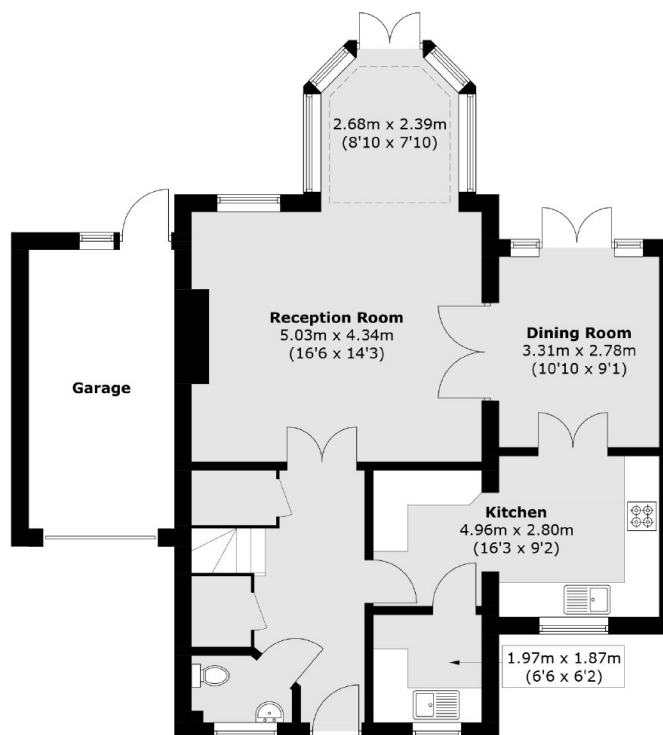




Angel Mews, London, SW15



First Floor



Ground Floor

Total area (approx.): 146.2 sq. m (1,573.7 sq. ft)
(Excluding Garage)