



Manor Fields, SW15

£985,000

A beautifully renovated three bedroom apartment that has been stripped back and refurbished to an exceptionally high standard with great attention to detail.

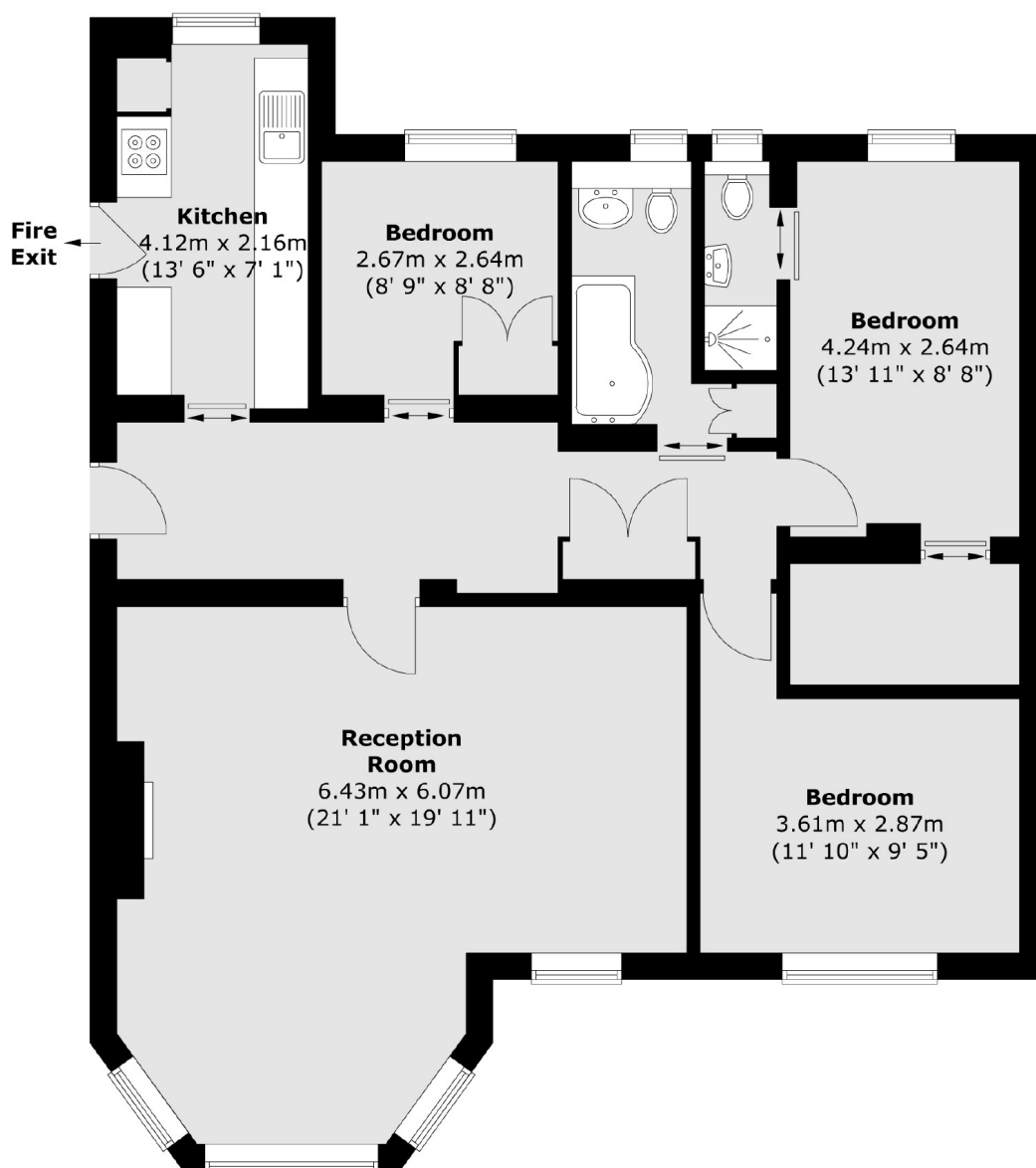
Manor Fields is a beautifully kept development located just off Putney Hill. Within walking distance of Putney High Street, mainline and tube station, there also plenty of bus routes regularly available for access to the high street and beyond.

Features

- Three Double Bedrooms
- Excellent Finish
- Two Bathrooms
- Walk In Wardrobe
- No Onward Chain
- Fantastic Location

Manor Fields, London, SW15

Second Floor



Total area (approx.) : 101.6 sq. m (1094 sq. ft)