



Roehampton Lane, SW15

£625,000

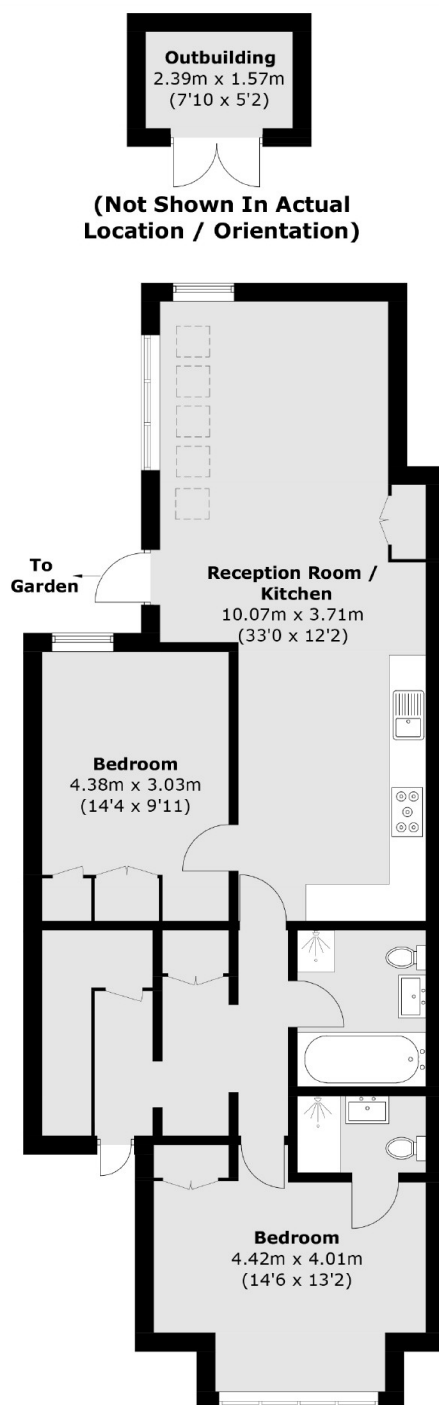
A 1000 sq ft period conversion flat with a spacious open plan reception, two double bedrooms, two bathrooms, a split level garden and private off street parking located only moments away from Barnes Common.

The property is located on Roehampton Lane opposite the Roehampton Club and very near to Barnes station and the Common.

Features

1000 sq ft
33 ft Reception Room
Two Bathrooms
Office in Garden
Off Street Parking
No Chain

Roehampton Lane, London, SW15



Total area (approx.): 88.8 sq. m (955.8 sq. ft)
Outbuilding : 3.9 sq. m (42.0 sq. ft)

Dexters

Putney
176 Putney High Street
London
SW15 1RS
Sales
020 8789 9999

Energy Rating: C. We aim to make our particulars both accurate and reliable. However they are not guaranteed; nor do they form part of an offer or contract. If you require clarification on any points then please contact us, especially if you're traveling some distance to view. Please note that appliances and heating systems have not been tested and therefore no warranties can be given as to their good working order.

 **RICS** | Regulated
Estate Agent
and Letting Agent

dexters.co.uk