



Dover House Road, SW15

£799,950

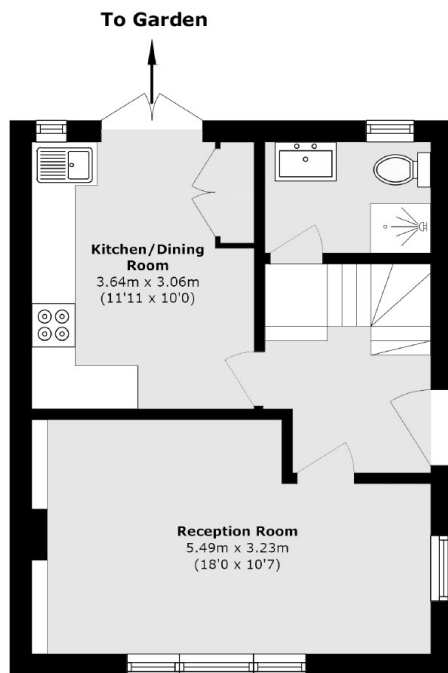
A three bedroom semi detached home with off street parking and the potential to be extended (STP) located in the popular Dover House Estate.

Dover House Road is a highly desirable location just off the Upper Richmond Road and nestled between Putney Heath & Barnes Common.

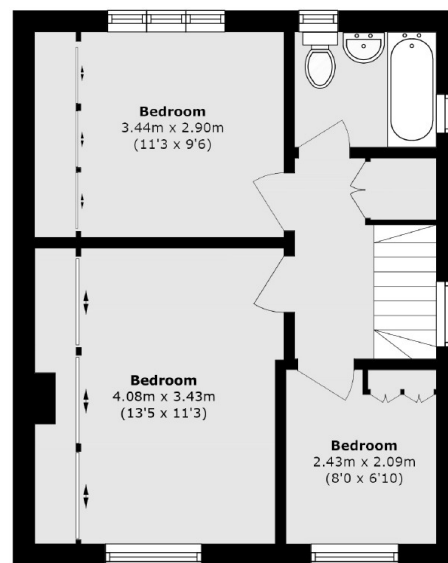
Features

- Semi Detached
- Eat in Kitchen
- Side Access
- Off Street Parking
- Potential to Extend (STP)
- No Chain

Dover House Road, London, SW15



Ground Floor



First Floor

Total area (approx.): 77.8 sq. m (837.4 sq. ft)