



Dyers Lane, SW15
£1,195,000

Dexters



Dyers Lane, SW15

A four bedroom end of terrace family home with a fantastic rear garden located in one of West Putney's most desirable residential streets.

Sitting at the end of a terrace of neighbouring period homes the property benefits from having side access which is a huge bonus. Behind its gates and pretty bay fronted exterior is a really well proportioned split level ground floor with a 27ft double reception room and 20ft eat in kitchen/breakfast room with guest cloakroom. Sliding doors lead out onto a really nice rear garden which features a brick built former garage currently being used as storage.

On the first floor there are three well proportioned double bedrooms and the main family bathroom. The loft has also been converted into a spacious bedroom with en suite and ample built in storage.

Dyers Lane is located off the Upper Richmond Road and just south of the Thames so ideally located for easy access into central Putney.

Features

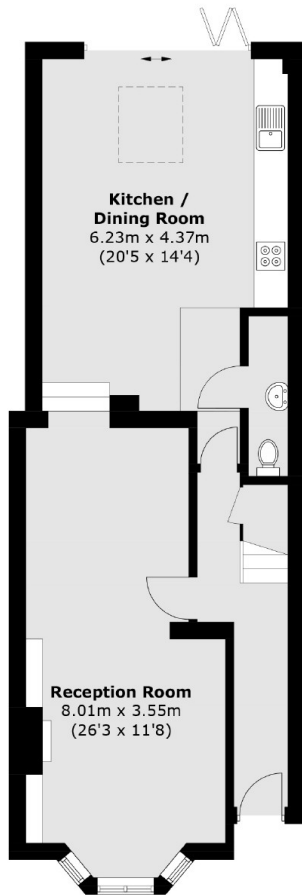
- Over 1500 sq ft
- Spacious Ground Floor
- Four Bedrooms
- Two Bathrooms & WC
- Great Garden
- Potential for Garden Office



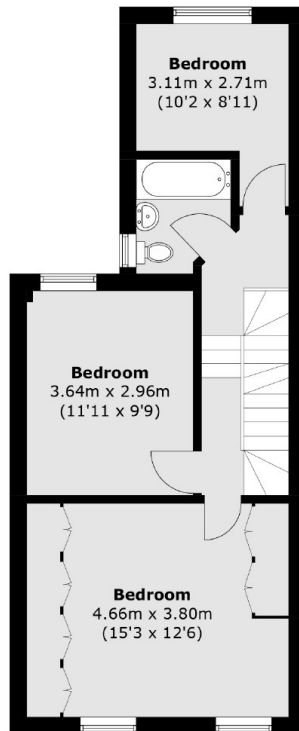




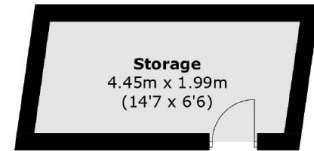
Dyers Lane, London, SW15



Ground Floor



First Floor



**(Not Shown In Actual
Location / Orientation)**



Second Floor

Total area (approx.): 141.3 sq. m (1520.8 sq. ft)
Storage : 8.9 sq. m (95.7 sq. ft)