



Wandle Way, SW18

£625,000

A beautifully refurbished starter home with a spacious open plan reception room, modern kitchen, two proper double bedrooms, modern shower room and a patio garden.

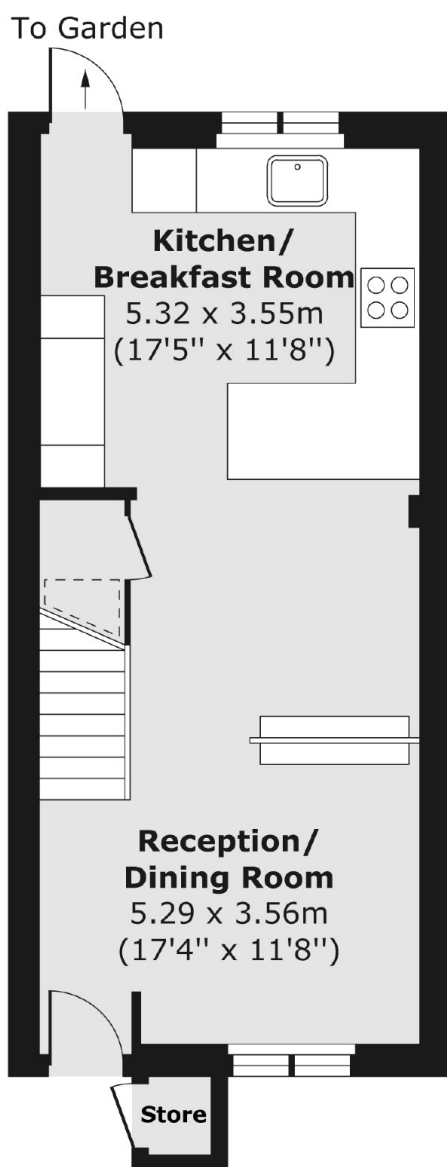
This lovely home is tucked away on Wandle Way a cul de sac overlooking the River Wandle by King Georges Park. Its also really well located for easy access to either Earlsfield or Southfields stations.

Features

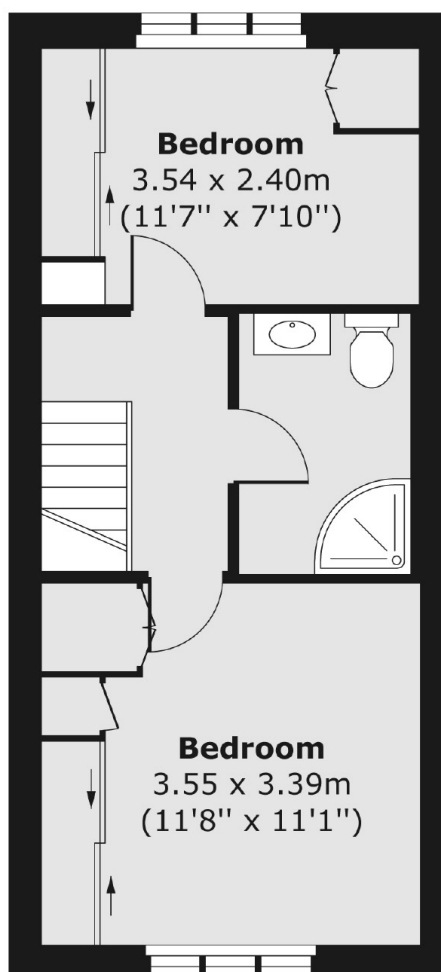
- Freehold
- Stunning Reception
- Two Double Bedrooms
- Front And Back Garden
- Potential to Extend (STP)
- Great Location

Wandle Way, London, SW18

Ground Floor



First Floor



Total area (approx.) 59.78 sq. m (643 sq. ft)
Store area (approx.) 0.44 sq. m (5 sq. ft)