



## Warwick Drive, SW15

### £399,999

A ground floor apartment with open plan reception, two double bedrooms, balcony overlooking communal gardens, private underground parking and a share of the freehold.

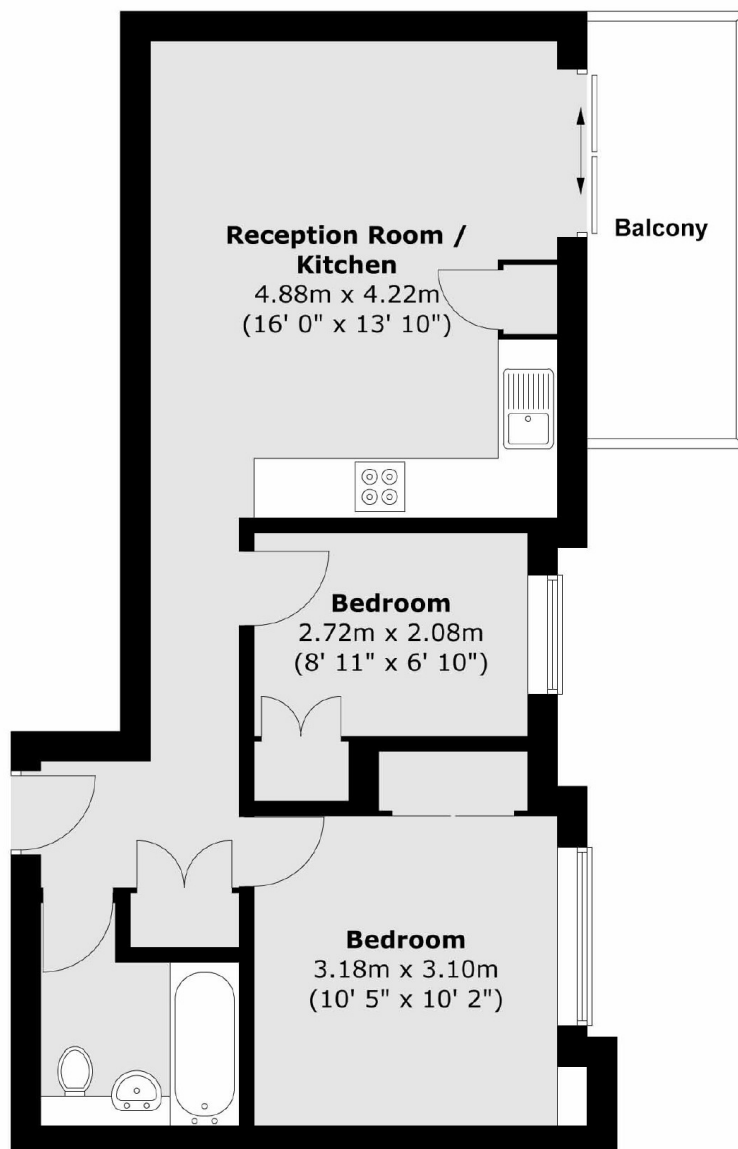
March Court is an attractive Art Deco building set back from Upper Richmond Road, ideally located for easy access to either Barnes or Putney.

### Features

- Open Plan Reception
- Two Double Bedrooms
- Balcony
- Underground Parking
- Share Of Freehold
- No Chain

# Warwick Drive, London, SW15

## Ground Floor



Total area (approx.) : 50.1 sq. m (539 sq. ft)  
Total balcony area (approx.) : 6.5 sq. m (70 sq. ft)